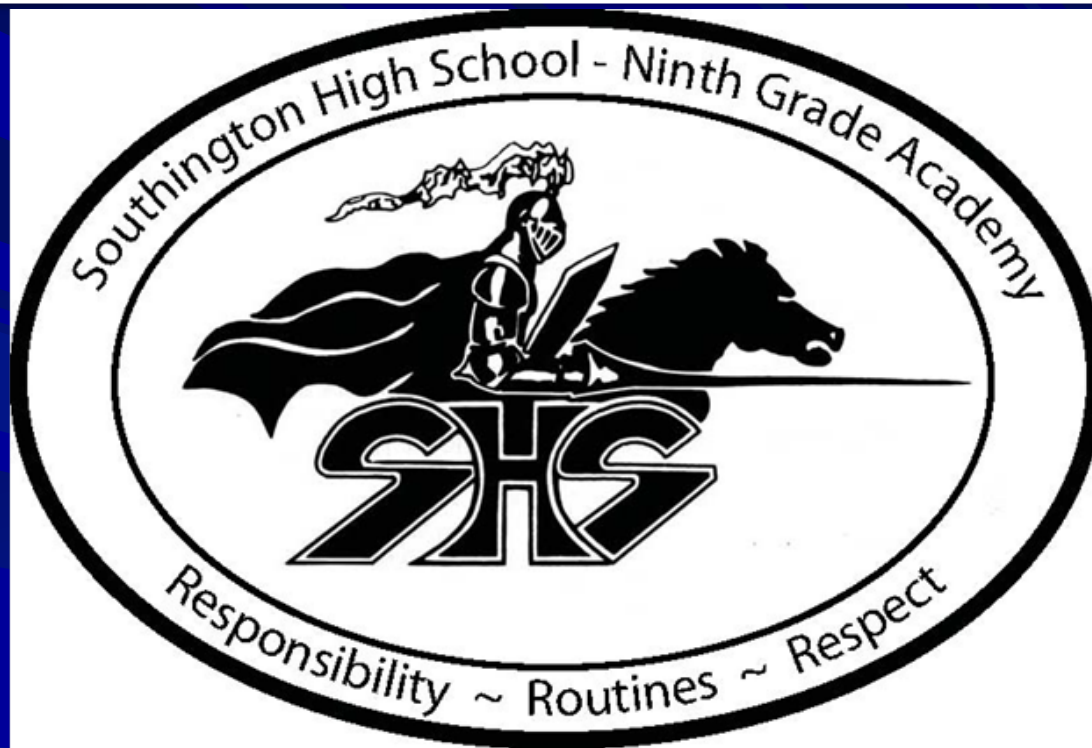


WELCOME CLASS OF 2024



**Mr. Pepe, Principal
Southington High School**



Mr. Aroian – Grade 9 Assistant Principal



Mrs. LaRose – Ninth Grade Academy Secretary





Mrs. Holst-Grubbe – Grade 10 Assistant Principal

Mr. Halloran – Grade 11 Assistant Principal



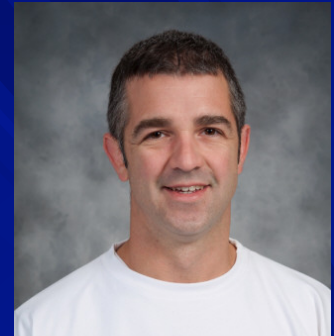
Mrs. Clark – Grade 12 Assistant Principal

Your 9th Grade Counseling Team

If your last name begins with the letters **A-K**, **Mrs. Anthony** is your counselor.



If you are in AgSci program, **Mrs. Ovalles** is your counselor.



If your last name begins with the letters **L-Z**, **Mr. Bugnacki** is your counselor.

If you are a student in GHAA or in our EL program, **Ms. Discenza** is your counselor. Ms. Discenza is also our Director of School Counseling



What is the role of my school counselor and the Ninth-Grade Academy?



Our Purpose

1. Your classes and schedule
2. Study tips
3. Dealing with stress
4. Planning your future and your course plans
5. College/scholarship information
6. Bullying
7. Relationship trouble
8. Problems at home
9. Mental health issues
10. Anything else!

How do I see my counselor?

- Canvas will have a “schedule an appointment with my counselor” option on your counselor’s page
- Leave a message for us in our office, if we are not available right away and we will contact you.
- Email your counselor directly
 - janthony@southingtonschools.org
 - mbugnacki@southingtonschools.org
 - sovalles@southingtonschools.org
 - jdiscenza@southingtonschools.org
- For more immediate concerns, go directly to either the 9th Grade Academy or the Student Support Center.

Stay Emotionally Healthy

Take a break when you need to.

Ask for help when you need it.

Get some fresh air.

Practice healthy self-care.

Attend to your relationship with yourself and others.

“It is possible to prepare for the future without knowing what it will be. The primary way to prepare for the unknown is to attend to the quality of our relationships, to how well we know and trust one another.”

MARGARET WHEATLEY

Show Compassion

Have Patience

Spread Kindness

Challenges for Ninth Grade Students

- New Software/Technology “Canvas”
- Amount of work each night
- Communicating directly with teachers using email/Canvas
- Higher level of independence
- Hybrid Model
- Finding the extra help you need- Math/Literacy Labs, etc.
- And much more! Your school counselors & administrator are here to help!

Agricultural Science and Technology

Mrs. Ovalles, School Counselor



What is AgSci?

- The program is open to students who are interested in developing skills in the agriculture career areas of animal science, agriculture mechanics, plant science, agriculture business management, biotechnology and the environment.

FAQ's continued...

- Starting in your sophomore year you will study agriculture two periods each day. The rest of your time is spent taking regular high school classes.
- You are a member of the Southington High School body just like any other student!
- You may take other elective courses and be involved in extracurricular activities too.

Naviance, PowerSchool and Accessing Email

- Should you have difficulty logging into Naviance, PowerSchool or accessing your email, stop by the Student Support Center (located next to the Nurse's office) and request assistance in resetting your password.



The first step to success begins today.....



National Honor Society

Southington High School Chapter – Advisor Tina Riccio

What is NHS?

- ✧ A national organization established to recognize the most outstanding high school students
- ✧ Member have demonstrated excellence in the following areas:

Scholarship

Leadership

Service

Character

- ✧ Inducted members **continue** to demonstrate their excellence by **fulfilling requirements** with the group

National Honor Society

Southington High School Chapter

Eligibility Requirements

- ✧ GPA: 98 (weighted)
- ✧ When: **Junior** Year, end of Semester 1
Senior year, end of Quarter 1
- ✧ Leadership: held/holds 1 **leadership role**
- ✧ Service: *School – 2 SHS activities per year
(Including grade 9)*
- ✧ *Community* – total of 20 hours
Work/Life – demonstrates experience

National Honor Society

Southington High School Chapter

Important Notes

✧ **Service:** **Can't be credited**

*Examples that
DO NOT count →*

*Agricultural Science, Culinary Arts
Marching Band, Project Lead the Way*

✧ **Community
Activities:** **Must be separate from other
requirements.**

*Examples that
DO NOT count →*

Confirmation

****Any questions, ask Mrs. Riccio**

Prepare for your own success. Get involved!



* Activities, Clubs and Sports
(including many freshmen teams)



SOUTHINGTON
Blue Knights
MARCHING BAND



Get Involved!!

- ❑ **Our Key Club** is committed to community service all year long. The club performs 6-8 service projects each month. Including today!

Key Club Advisors – Mrs. Hosmer

- ❑ **Our Aspiring Medical Professional Club** is committed to help members better understand the different components of the medical field and health related sciences.

Advisor – Mr. DeStefano

- ❑ **Our Best Buddies Club** is committed to enhancing the lives of people with intellectual disabilities.

Best Buddies Advisor – Mrs. Albert

The background of the slide features a grayscale photograph of three students in a laboratory setting. They are wearing safety goggles and are focused on using microscopes. The image is semi-transparent, allowing the text to be clearly visible. The slide is framed by dark blue geometric patterns at the top and bottom.

SOUTHINGTON HIGH SCHOOL

EXTRACURRICULAR ACTIVITIES

KARI LUISE, *PLTW AND TECHNOLOGY & ENGINEERING DEPARTMENT*

EXTRACURRICULAR ACTIVITIES PROMOTES



Academic Performance



Interests & Perspectives



Higher Self Esteem



Social Opportunities



EXTRACURRICULAR ACTIVITIES PROMOTES



Productive Breaks



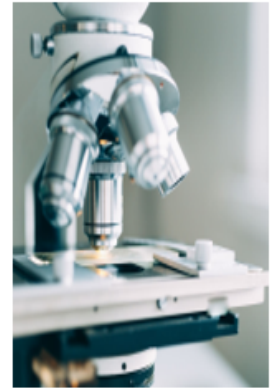
Essential Life Skills



Resumés



University Applications





■ Social Response ■ Art & Literature ■ Indoor Sports
■ Outdoor Sports ■ Technology & Science ■ Culture & Languages

**+70 CLUB
&
SPORTS
ACTIVITIES**



WISE INTRODUCES ITS FIRST VIRTUAL PROGRAM:

"Discovering Frank-
the architecture of
Frank Lloyd
Wright",

"COVID: Vaccine
Trials"

"On and Off - The
Basis to all of our
Electronics"

" (What) To be or Not
to Be - that is the
Question - University
and Career
Preparation"

- KARI LUISE, KLUISE@SOUTHINGTONSCHOOLS.ORG
- SHARON KIRSCHKE, SKIRSCHKE@SOUTHINGTONSCHOOLS.ORG

"WE ARE STANDING TOGETHER... ONLY 6 FEET APART!"

Student Photo ID's



1. If you had your picture taken at JFK or JAD, you're all set.
2. If you're new to our town or have never had a picture taken for your student identification, please report to the main office at some point during your tour today and get your photo taken.

****If you have a study hall or lunch in your schedule today, that would be a very good time to have your picture taken. Ask your teacher if you can go to the main office to have your picture taken.**

Bus Information

■ Buses

- Bus routes were listed in the paper.
- The bus # you come in on will be the same as you leave.
- Buses line up numerically and depart the front of the building at 2:21. Buses for out of district AgSci students depart from the front of the AgSci building.

AG-SCI



TECH ED

WEST

CENTER

EAST

Pleasant St.



**Music/
Art**

Flanders St.

©2011 Europa Technologies
©2011 Google
41°37'01.49" N 72°51'40.24" W elev 2381ft

1991

Lunch Procedure:

Starting tomorrow you will all eat in the freshman café during your scheduled lunch period.

If you are participating remotely on any day, a study hall or lunch is a great time to take a break from your device. Just make sure you are back on time!

What to expect Wednesday 9/9, for Cohorts A & C

- We open our doors at 7:17AM.
- First period will start at 7:32 and will be longer in order to convey the necessary information
- Copy of an **updated** schedule
- You will go to each class that meets on **A Day**
- Dismissal will occur on the first day at 2:09 to make sure you find your busses on time.

What to expect Wednesday 9/9, for Cohort B and Remote students

- **Remote** - First period will start at 7:32 and will be longer in order to convey the necessary information
 - You will go to each class *virtually* that meets on **A Day**
 - School ends at 2:09.
-
- **Cohort B** – sleep late and relax.

What to expect on Thursday 9/10

- We open our doors at 7:17AM.
- Cohort B comes to school for first period which will start at 7:32.
- Copy of an **updated** schedule and your ID
- You will go to each class that meets on **B Day**
- Dismissal will occur at 2:09 to make sure you find your busses on time.
- **Cohort A, C and remote** have the day off – sleep late and relax.

What to expect on Friday 9/11, for everyone

- We open our doors at 7:17AM.
- **Cohort A & C** come to school for first period which will start at 7:32.
- You will go to each class that meets on **C Day**
- Dismissal will occur at 2:09 to make sure you find your busses on time.
- **Cohort B and Remote** will follow your schedule remotely by logging into all your C day classes live during the time they're meeting.

SCHEDULES

A 6-day rotation!!
How do I read
this schedule?!

With
different
cohorts?

Day \ Period	1	2	3	4	5	6
1	4th, K	4th, F	3rd, F	FREE	3rd, C	Special Ed., V
2	Art 7	2nd, H	Art 7	2nd, F	Art 7	FREE
3	Studio Art	Studio Art	Studio Art	Studio Art	Studio Art	Studio Art
4	1st, O	Kinder, B	FREE	1st, R	Kinder, L	Special Ed., C
5A	6th, H	LUNCH	FREE	LUNCH	6th, D	LUNCH
5B	LUNCH	Art Elective	LUNCH	Art Elective	LUNCH	Art Elective
6	FREE	FREE	FREE	FREE	FREE	FREE
7	5th, C	Art 7	5th, S	Art 7	FREE	Art 7
8	Studio Art	Studio Art	Studio Art	Studio Art	Studio Art	Studio Art

Daily Expectations

Cohort A comes to school in person on A, C and E days.

Cohort B comes to school on B, D and F days.

On any day when you are participating virtually, you are expected to log into your classroom ON TIME. Attendance will be taken in the first few minutes of class.

- Your face MUST be present on the screen. No emojis or Avatars.**

Student Class Schedule

Southington High School

Grade 9

Student ID: [REDACTED]

Counselor: Anthony

Locker: No lockers this year

CT SASID: [REDACTED]

Locker Combo:

Period/Day	Term	Course Name	Course	Section	Teacher	Room
1(A,D)	S1	Health I F	HE1110	1	Raponey	C107
2(A-F)	19-20	English I CCP	EN1120	12	Pettit	C324
3(A-F)	S1	Microsoft Office I CP	BE1510	2	Cooney	C213
4(A-F)	19-20	Earth Science CCP	SC1120	3	Weisman	E353
5(A-F)	S1	Lunch 9 F	LUN9FA	3	STAFF	AUXCAF
6(A-F)	19-20	Modern U.S. History CCP	SO1220	9	Connolly	C221
7(A-F)	19-20	Algebra I CP	MA1110	6	Albert	E286
8(A-F)	19-20	Intermediate Low French 2 H	WL2130	3	Nobou	E362
10(A-F)	19-20	Homeroom 9	HR1000	1	Dougherty	E252
1(B,E)	S1	Study 9	STDY9HS	2165	STAFF	CAFE
1(C,F)	S1	Physical Education I F	PE1110	9	Murphy	WGYM

Period/Day	Term	Course Name	Course	Section	Teacher	Room
1(A-F)	S2	Microsoft Office II CCP	BE1520	1	Spinello	W260
2(A-F)	19-20	English I CCP	EN1120	12	Pettit	C324
3(A,D)	S2	Health I S	HE1111	1	Raponey	C107
4(A-F)	19-20	Earth Science CCP	SC1120	3	Weisman	E353
5(A-F)	S2	Lunch 9 S	LUN9SP	3	STAFF	AUXCAF
6(A-F)	19-20	Modern U.S. History CCP	SO1220	9	Connolly	C221
7(A-F)	19-20	Algebra I CP	MA1110	6	Albert	E286
8(A-F)	19-20	Intermediate Low French 2 H	WL2130	3	Nobou	E362
10(A-F)	19-20	Homeroom 9	HR1000	1	Dougherty	E252
3(B,E)	S2	Study 9	STDY9HS	2210	STAFF	CAFE
3(C,F)	S2	Physical Education I S	PE1111	6	Gleason	WGYM

How will I ever find my way around this building?

■ Classrooms

- Room #'s beginning with a 1 are in the basement
- Room #'s beginning with a 2 are on main floor
- Room #'s beginning with a 3 are upstairs

■ Building Layout

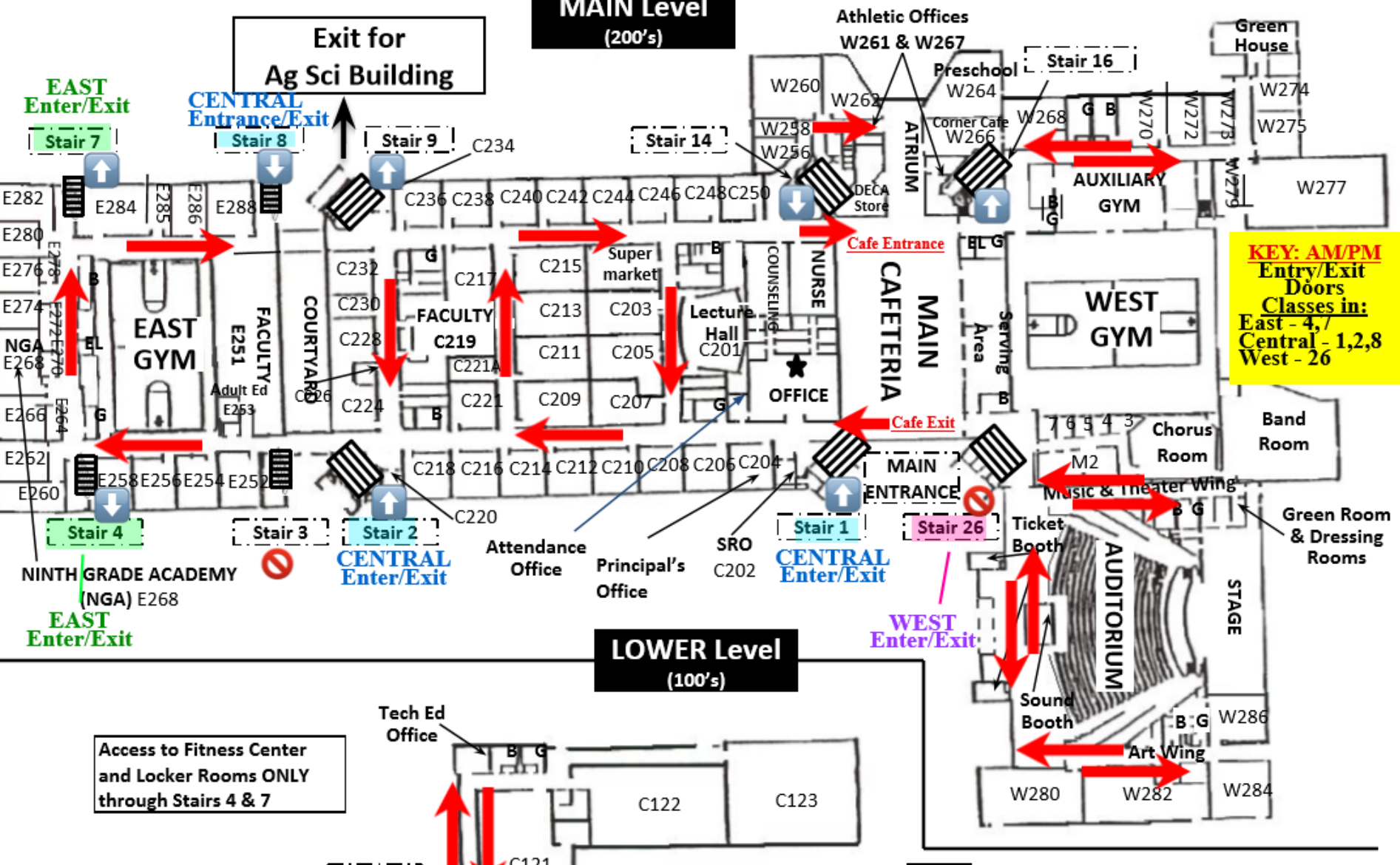
E = (East) -The Blue Section closest to Pleasant St. It houses most freshmen classes.

C = (Central) - The main part of the building

W = (West) - Auditorium, Arts, Health, Main Gym (Anything on this side of the main cafeteria)

A = AgSci - The Agricultural Science Building is located near the tennis courts. Best accessed by exit 8 - near E288.

MAIN Level
(200's)



Feeling overwhelmed in your first month?

**HW-Study-Test-
HW-Study-Test –
I'm
overwhelmed!**



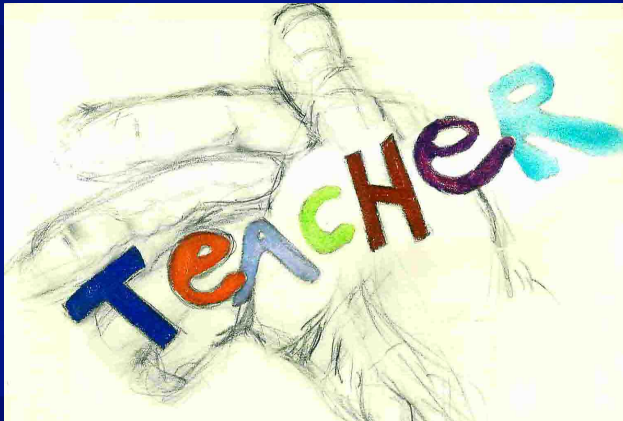
Hellp!!

Hellp!!



Well don't forget...

***Your teachers want you to
succeed! Let them help!***



Help
meeeee!

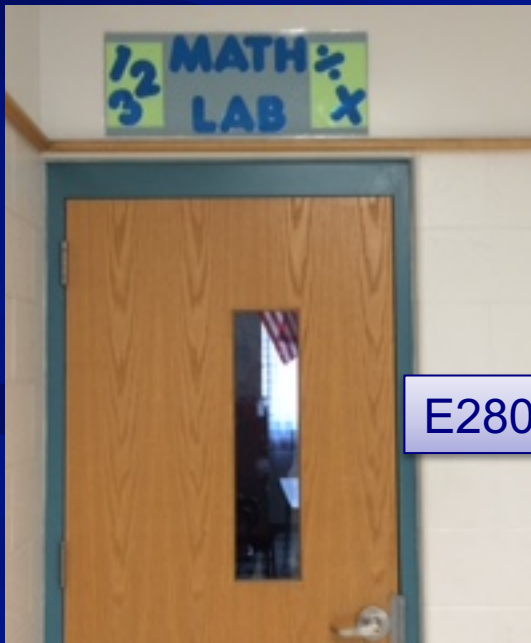
While your teachers are always available to help, you may find you need more!

Look for these rooms during your tour today!

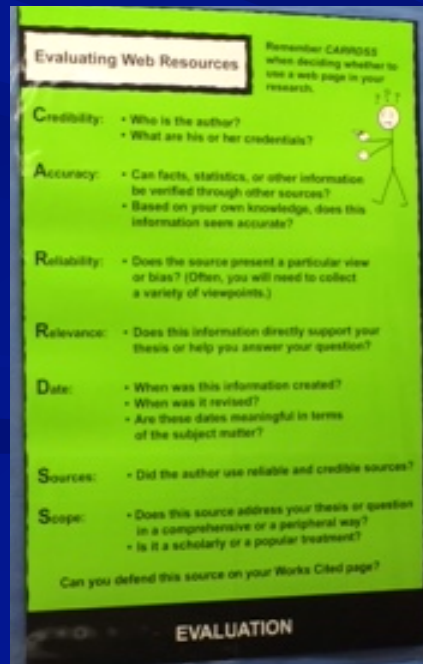
Our Math and Writing Labs are available during any of your study halls or lunch. Teachers are on duty to help you!

No need to sign up – just sign in when you show up!

Located in our Library/Media Center



E280



Writing Lab

Final Thoughts!

- We are excited to have you as part of the SHS Community!
- Bring your school issued laptop to school everyday you are here.
- Know which door to use to enter the building in the morning.
- Mask breaks can be held in the library or cafeteria as long as you are sitting in your seat and at least 6 feet from your neighbor.

Here to introduce Southington High School to you!

- Your Tour Guides for today....
- National Honor Society members

**Volunteering their time to make your time worthwhile.

Let's head to the cafeteria!

