



# Southington Public Schools

## Enrollment Projections & Elementary Facility Plan

May 26, 2022



# Contents

- Projections Review
- Enrollment Drivers – Demographics and Housing
- Student Enrollment Trends & Projections
- Capacity and Utilization



# Projections Comparison

Medium Comparison	K	1	2	3	4	5	6	7	8	9	10	11	12	PK	K-5th	6th-8th	9th-12th	K-12th	PK-12th
<b>2021-22 Proj. (Med.)</b>	459	489	473	451	447	449	439	518	518	486	472	530	512	98	2,768	1,474	2,000	6,243	6,341
<b>2021-22 Actual</b>	432	441	462	426	430	443	451	512	500	511	479	533	543	104	2,634	1,463	2,066	6,163	6,267
<b>Deviation</b>	-27	-48	-11	-25	-17	-6	12	-6	-18	25	7	3	31	6	-134	-11	66	-80	-74
<b>% Diff.</b>	-6.0%	-9.9%	-2.3%	-5.5%	-3.8%	-1.2%	2.8%	-1.1%	-3.4%	5.1%	1.5%	0.5%	6.1%	6.1%	-4.8%	-0.8%	3.3%	-1.3%	-1.2%

- Projections last updated in Spring of 2019 were compared to 2021-22 actual enrollment to assess performance of projection model
- Over the past 3-years, projections have fared well. PK-12 enrollments are 74 students lower than projected (-1.2%)
- Elementary enrollment was 134 students less than projected with greatest deviation at Thalberg (-57) and Strong (-37). Hatton, Kelley, and Flanders were close to the projected. While Derynoski, Oshana, and South End were roughly two dozen students lower.
- Middle school was 11 students lower than projected and high school was 66 students greater than projected

Elementary School	K-5 Actual Enrollment	K-5 Projected Enrollment	Difference
Derynoski	538	565	-27
Flanders	277	287	-10
Hatton	324	320	4
Kelley	286	291	-5
Oshana	244	270	-26
South End	230	256	-26
Strong	263	300	-37
Thalberg	423	480	-57



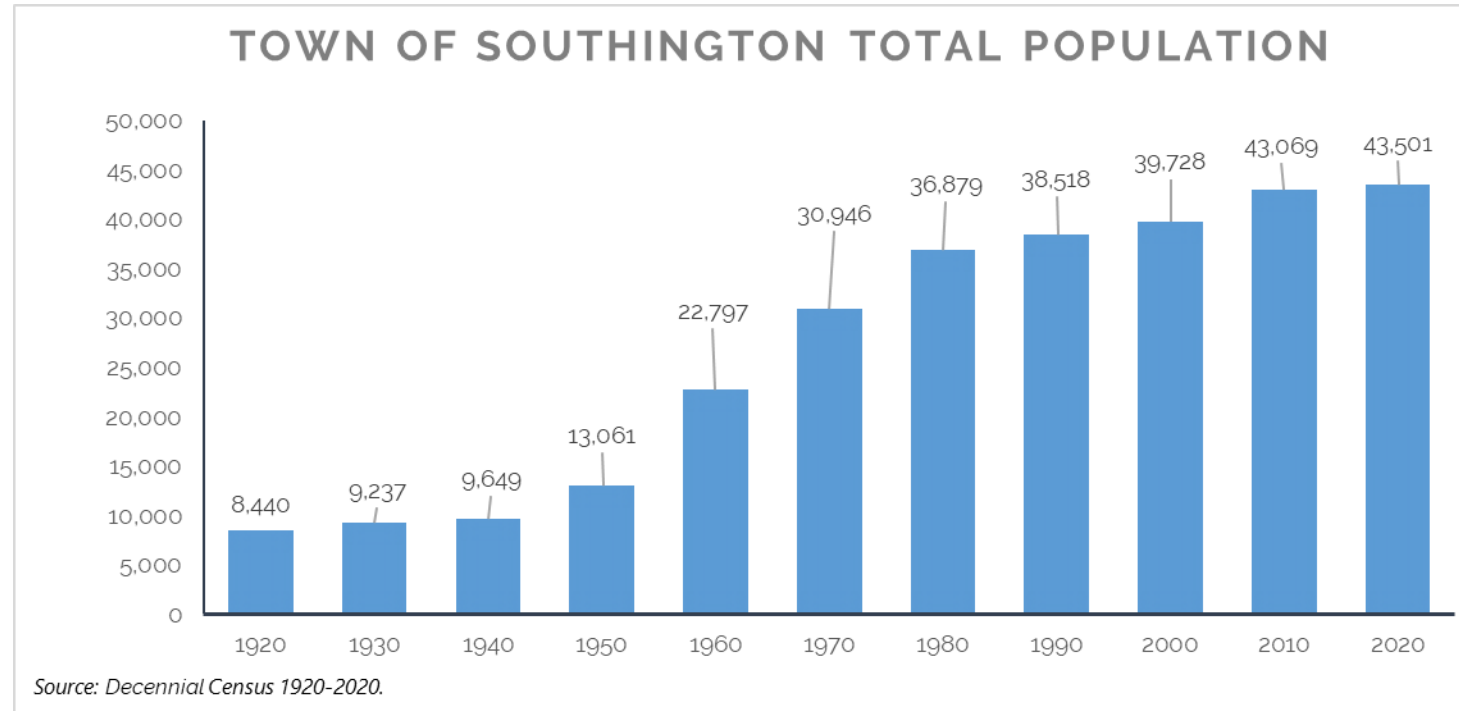
# Enrollment Drivers

## Factors Influencing SPS Enrollment Projections



# Southington's Population

- According to 2020 Decennial Census, Southington's total population grew by 432 or 1% over the last decade.
- Impacts from the pandemic over the last 20 months not captured in 2020 Decennial census counts

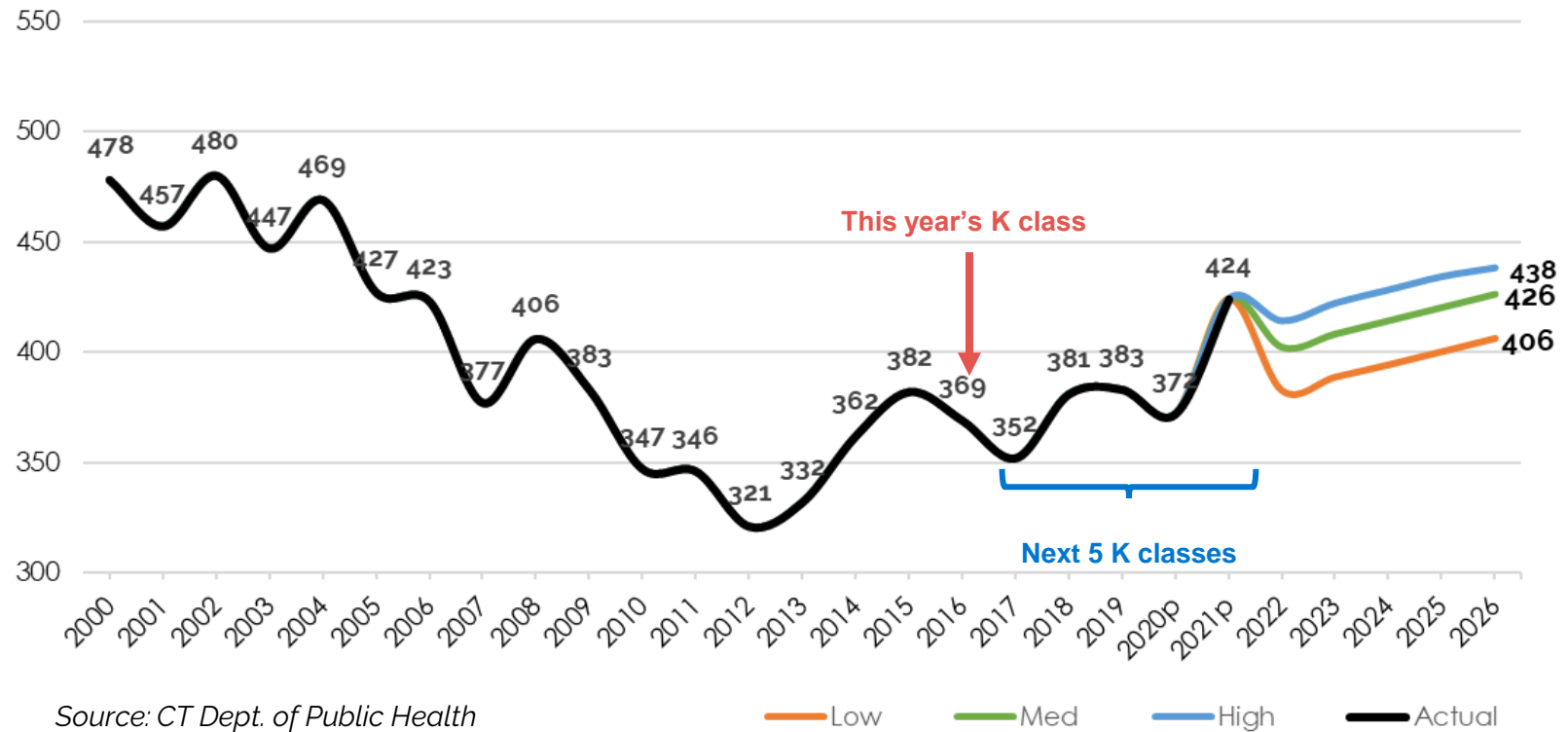




# Reported Births & Projections

- 2021 births are the highest point since 2005.
- From 2016- 2020 births average 371 annually.
- Absent of 2020 census cohort level data, mathematical models were used to project future births. The three birth models yielded:
  - Low model: avg. 399 (382-406)
  - Medium model: avg. 416 (402-426)
  - High model: avg. 427 (414-438)

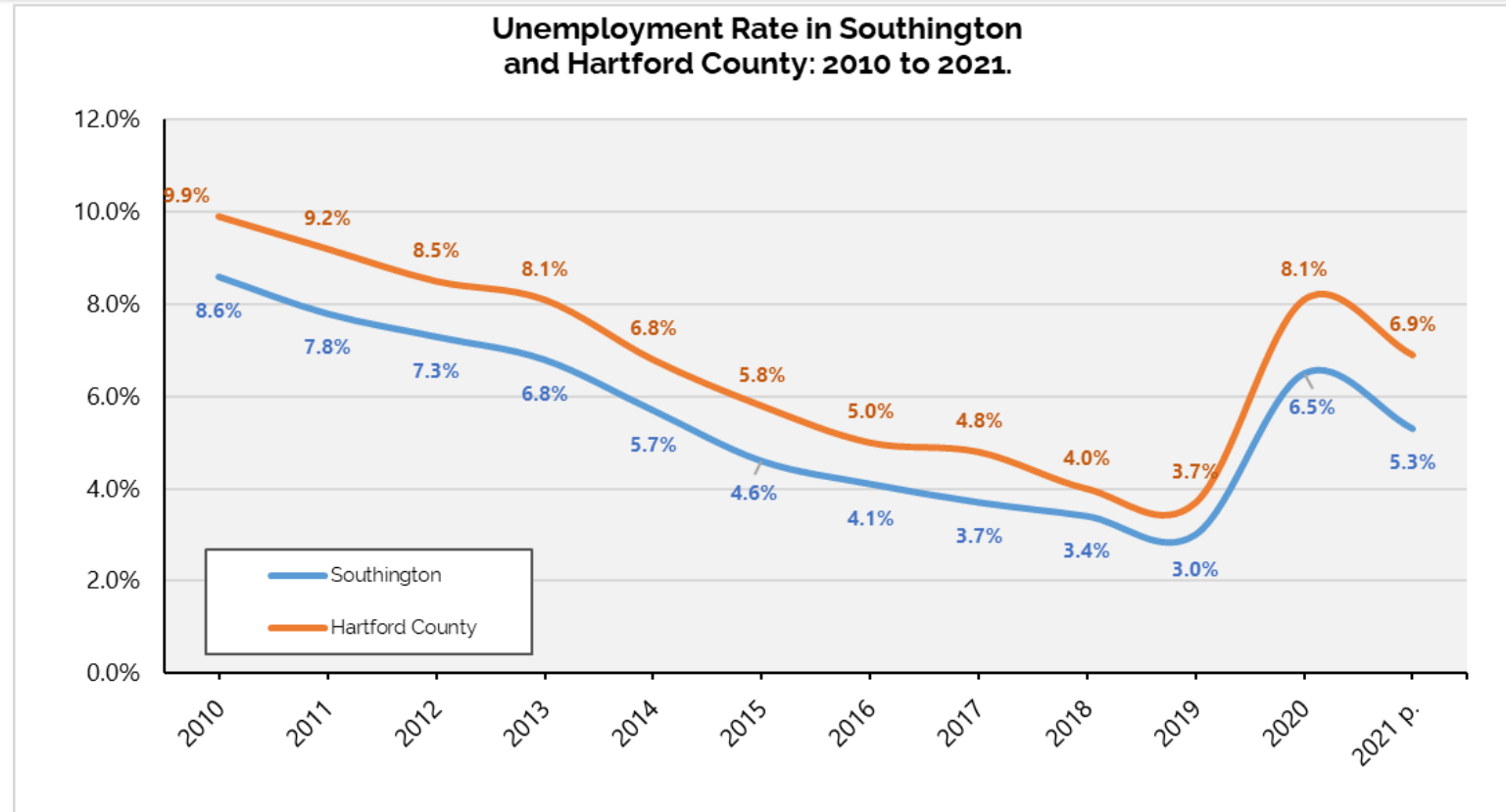
Southington Actual and Projected Births (2000- 2026)





# Employment

- Significant increase in unemployment due to COVID-19 pandemic with a peak of 6.5% locally and 8.1% for Hartford County in 2020
- Unemployment slowly improved in 2021 with local rate at 5.3% and Hartford County at 6.9% (YTD through Nov.)
- Workforce shifts continue to impact current housing and migration trends with longer-term outlook still very much in flux

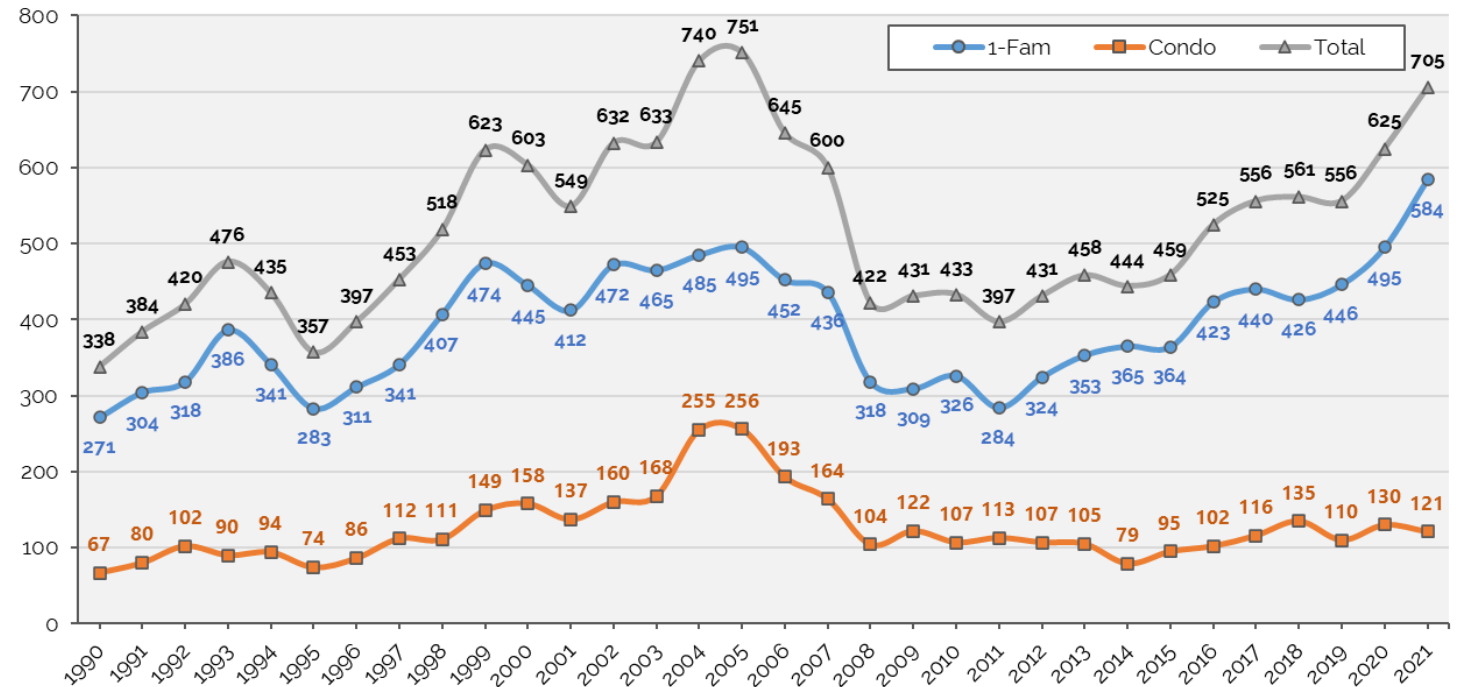




# Housing Market

- Over 70% of Town's housing stock is single family detached units with housing options across a broad range of price points to attract first time homebuyers, up-sizers, downsizers, etc.
- Since onset of pandemic, single family homes sales have increased by nearly 140 annually with a recent peak of 584 for 2021
- Condo sales have not experienced the same increase as single family housing. Condo sales have averaged 122 annually over the last 5-years
- Total sales have returned to levels experienced prior to the "Great Recession" just trailing prior peak in 2004

**Southington Home Sales: 1990 to 2021**



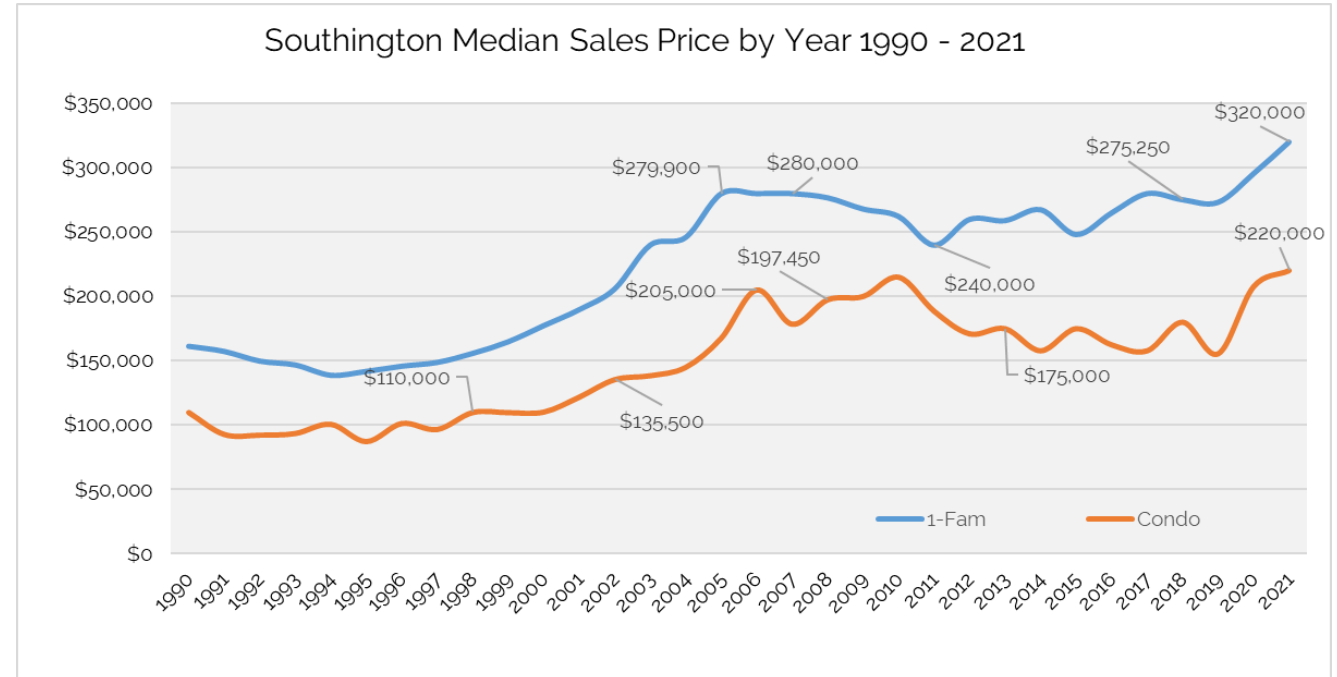
Source: The Warren Group.





# Housing Market

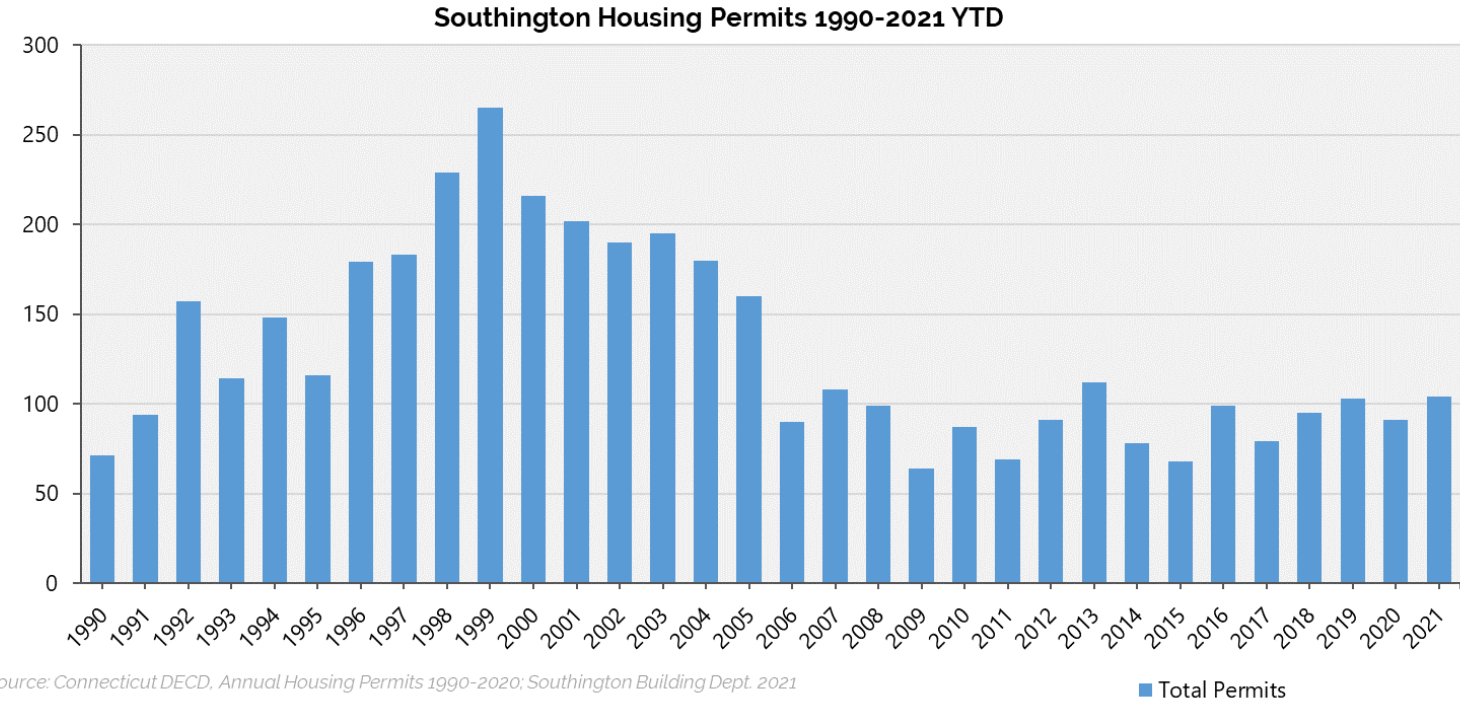
- 2021 YTD single family median sale price has increased to \$320,000 up from \$295,500 in 2020
- Past two years, single family median sale price has exceeded prior peak from the early 2000's
- Median sale price for condos was \$220,000 for 2021. The prior peak for condo sale price was \$214,900 (2010)
- Southington has consistently had higher sales prices than more urban and rural neighboring communities, however, significantly lower median sale prices than neighboring Cheshire





# Housing Trends

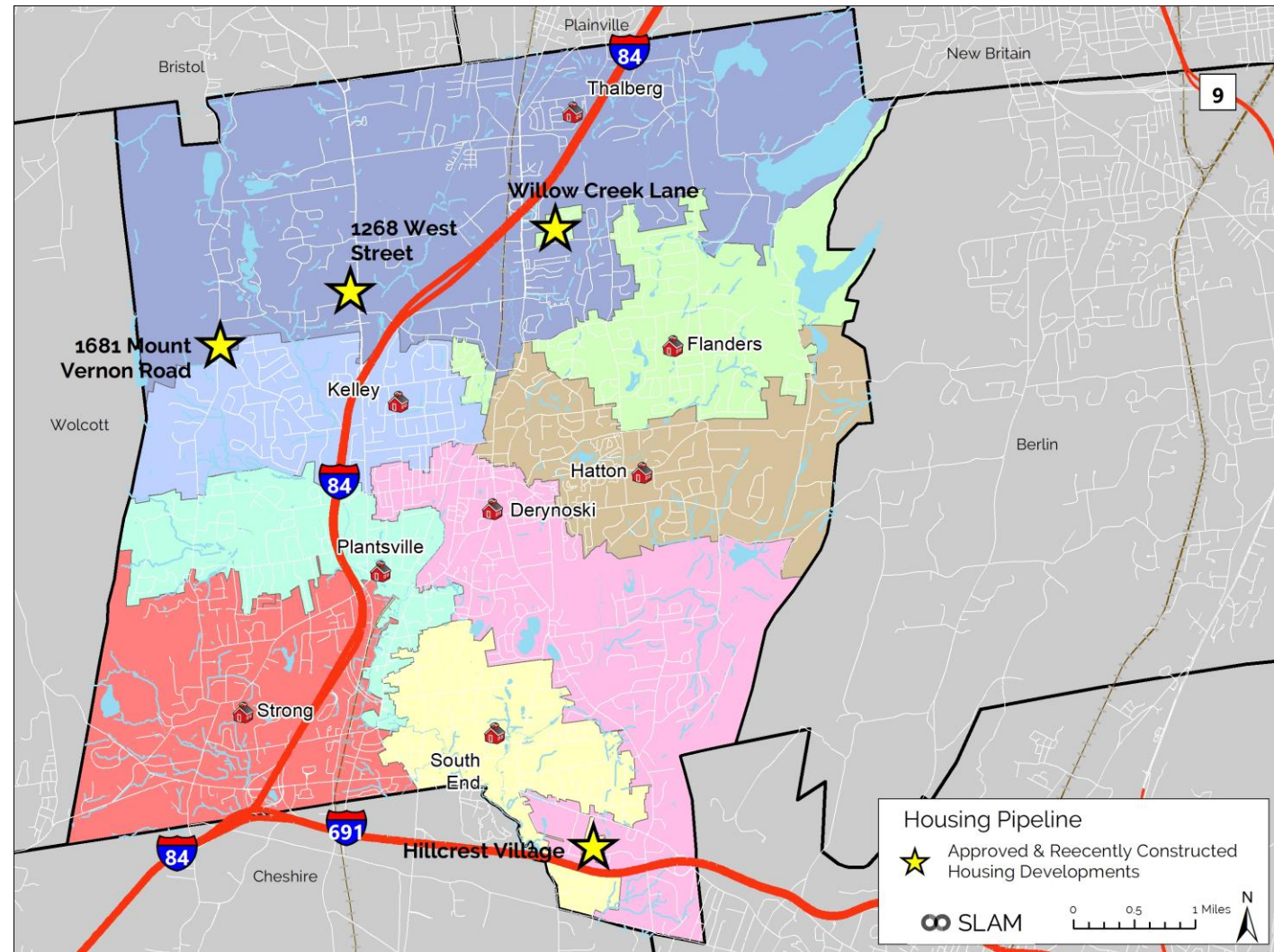
- New home construction dropped off steeply since the late 1990s and early 2000s
- Since 2016, the town has been stable, averaging just under 95 new units per year





# Recent and Approved Housing

- The greatest number of units for new housing is located in South End, Flanders, followed by Thalberg.
- Hillcrest Village and Willow Creek Lane subdivision at 100 and 72 units, respectively, are both estimated at 90% constructed
- In Thalberg, 1268 West Street has been recently approved but not yet constructed, and Mountainside Farms is under construction
- Additionally, there are smaller infill development and lots splits scattered throughout the community. These are all captured in the baseline projections





# Estimated Student Generation

Estimated Students Generated from Approved, Under Construction or Recently Built Housing

Address	Status	Total Units	Estimated Student Generation				Existing Elem. Zone
			Elementary	Middle	High	Total	
Hillcrest Village	Under Construction (90%)	100	26	11	22	59	South End
1681 Mount Vernon Rd AKA Mountainside Farms	Under Construction - 9 vacant lots	12	3	1	3	7	Thalberg
Willow Creek Lane	Under Construction (90%)	72	19	8	16	43	Flanders
1268 West Street	Approved	33	9	4	7	20	Thalberg
Total:		217	57	24	48	129	

Source: Town of Southington Planning Department, Jan. 2022

Multipliers and student generation developed based on comparable ESI Multipliers for CT (2015)

- Student generation was estimated from the 2015 ESI Multipliers for Connecticut, and by examining enrollments for newer single family housing in town.
- Hillcrest Village has generated 42 student (2021-22) to date, however, as construction completes, certificates of occupancy are issued and units are sold, additional students will be generated over time as the housing matures.
- Willow Creek Lane has also been generating students with 28 students (2021-22) residing in this subdivision. Similar to Hillcrest Village, it is estimated that an additional 15 students will be added over time as housing matures.
- The first students have entered the system and are already influencing enrollment. Additional students are incrementally added thereafter, reaching the total yield by 2028-29



# Enrollment Trends & Analysis

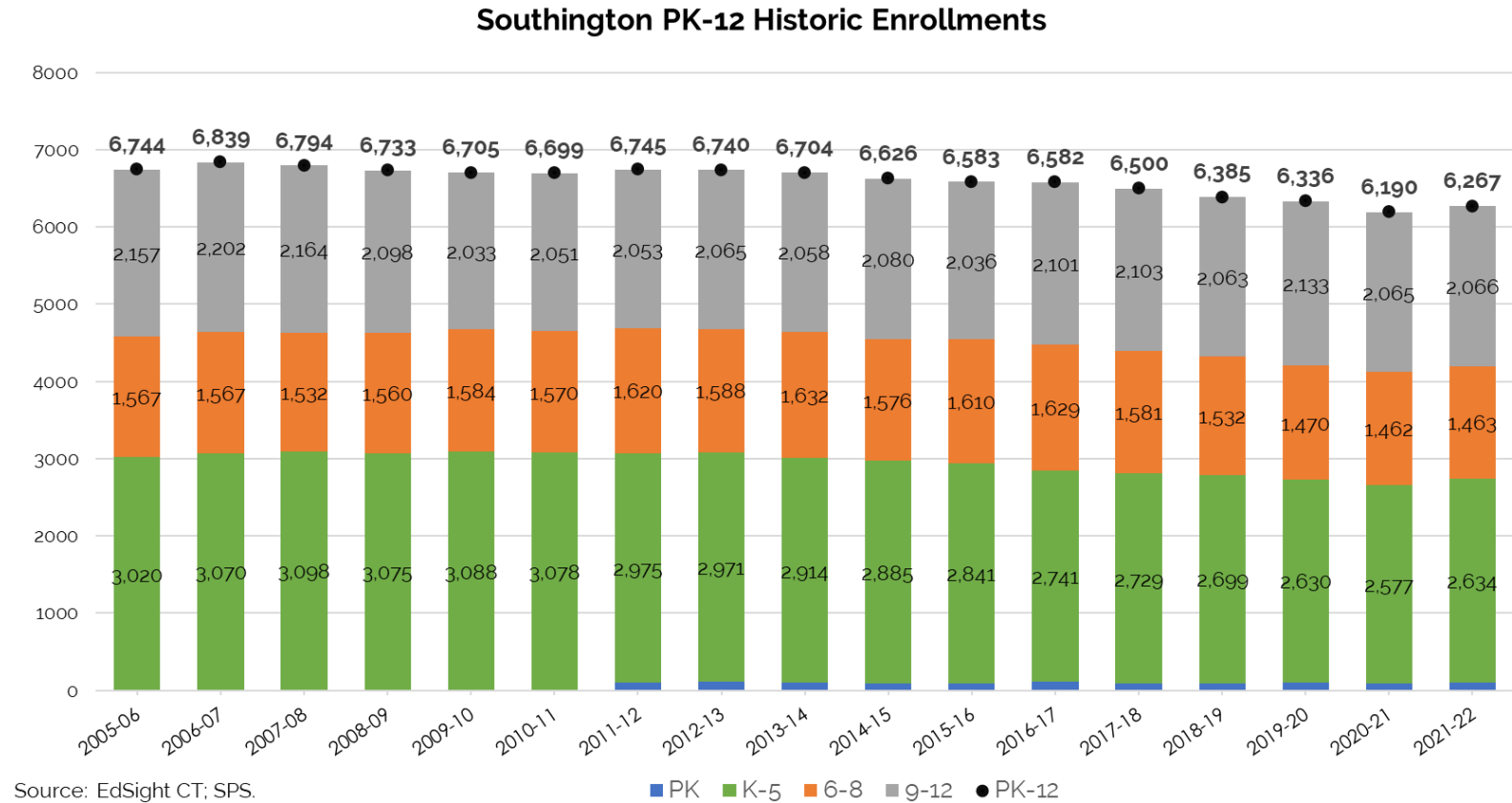
## Enrollment Trends & Analysis





# Districtwide Historic Enrollments

- For 2021-22, SPS enrollment rebounded to nearly 6,270 students after dipping below 6,200 in 2020-21
- Over the last 5-years enrollment has been stable averaging 6,336 students.
- Over this period, enrollment across grade levels averaged:
  - K-5<sup>th</sup> avg: 2,654 students
  - 6<sup>th</sup>-8<sup>th</sup> avg: 1,502 students
  - 9<sup>th</sup>-12<sup>th</sup> avg: 2,086 students

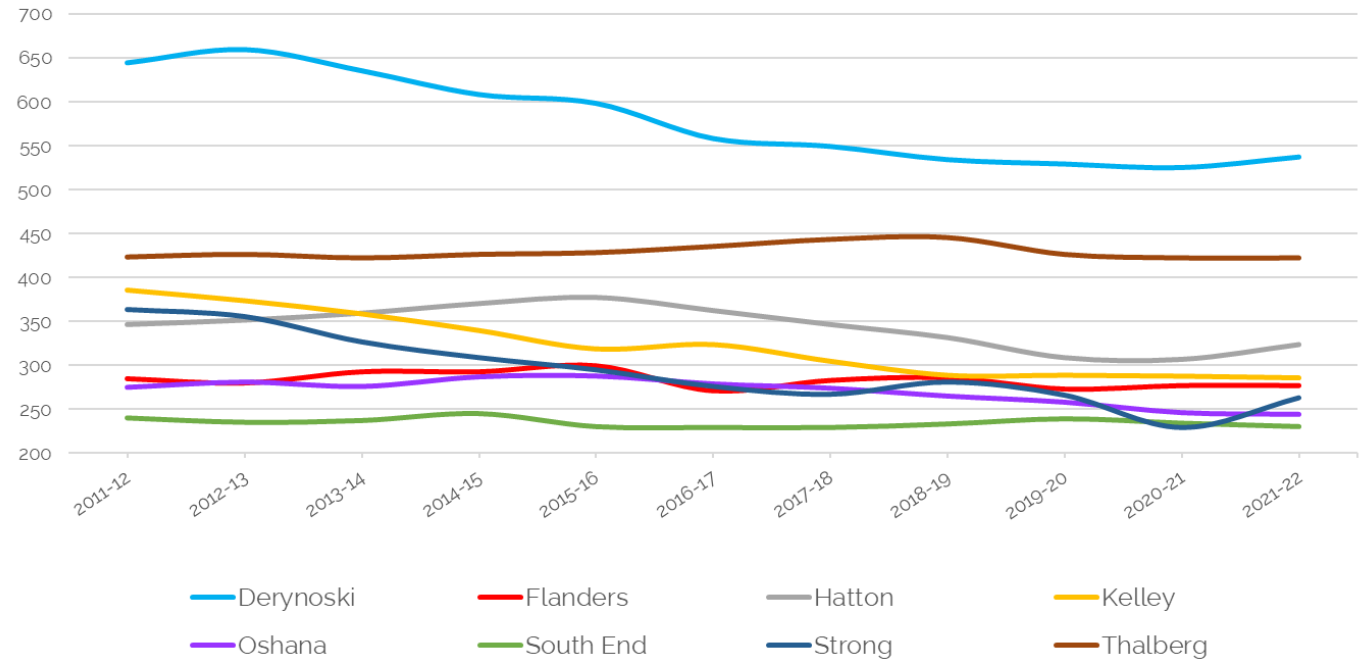




# Elementary Historic Enrollments

- Overall K-5 enrollment has declined by just under 337 students over the last decade to 2,634 students in 2021-22
- Although the collective K-5 grades declined by 11.3%, there have been localized enrollment fluctuations across the individual elementary schools.
- Focusing on the last 5-years:
  - Hatton, Kelley & Oshana have declined by roughly 10%-12.5%
  - Derynoski, Strong and Thalberg declined by less than 5%
  - Flanders and South End have experienced modest growth of less than 2%

Southington Elementary Schools K-5 Enrollment



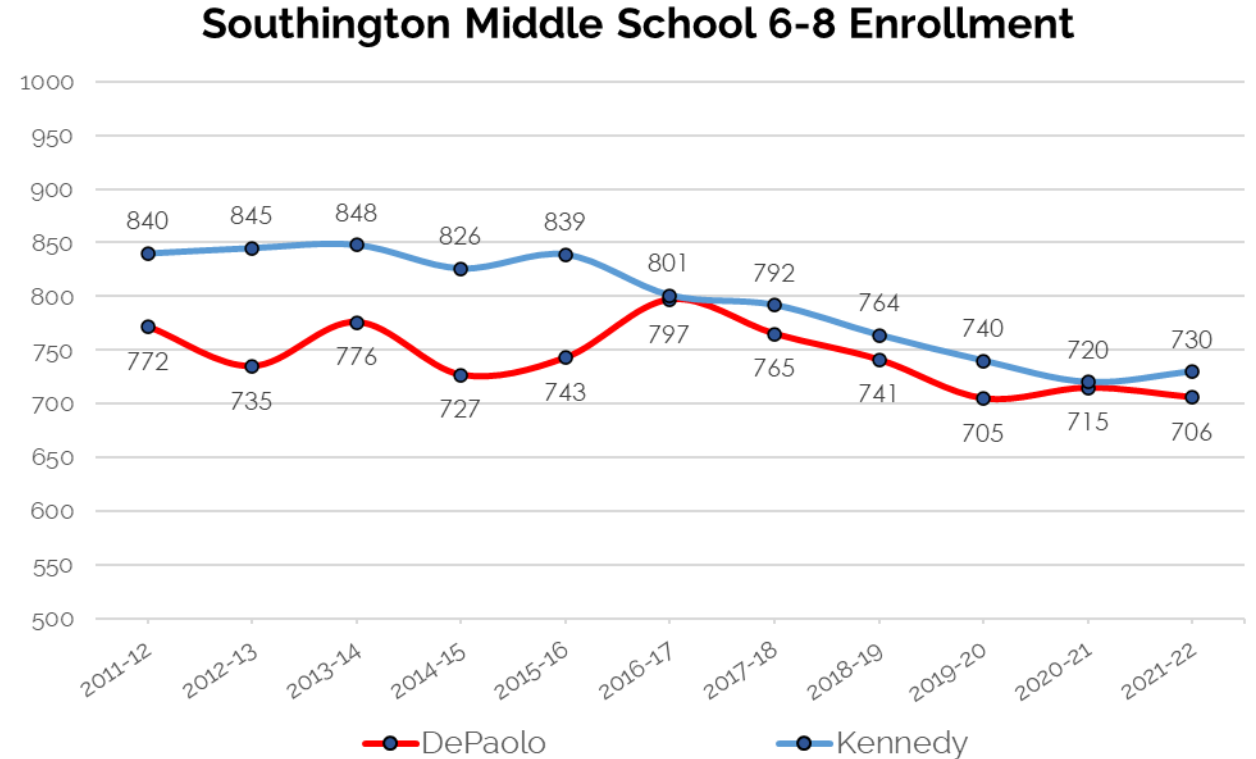
Source: CTEdSight; SPS.

	2011-12	2012-13	2013-14	2014-15	2015-16	2016-17	2017-18	2018-19	2019-20	2020-21	2021-22	5-yr Δ	10-yr Δ
Derynoski	645	660	636	609	599	559	550	535	530	526	538	-3.8%	-16.6%
Flanders	285	280	293	293	300	271	283	286	273	277	277	2.2%	-2.8%
Hatton	347	352	360	371	378	363	347	332	309	307	324	-10.7%	-6.6%
Kelley	386	374	359	340	319	324	305	289	289	288	286	-11.7%	-25.9%
Oshana	275	281	276	287	288	279	274	265	258	246	244	-12.5%	-11.3%
South End	240	235	237	245	230	229	229	233	239	234	230	0.4%	-4.2%
Strong	364	356	327	309	295	276	267	281	266	229	263	-4.7%	-27.7%
Thalberg	424	427	423	427	429	436	444	446	427	423	423	-3.0%	-0.2%



# Middle Historic Enrollments

- Historically Kennedy's enrollment has been larger than DePaolo, with the enrollment delta varying between 50-100 students up until 2016-17
- Over the last 5-years, both middle schools have had similar enrollment trends with Kennedy still maintaining greater enrollment, however, the gap has narrowed
- 2021-22 enrollment has Kennedy at 730 students and DePaolo at 706

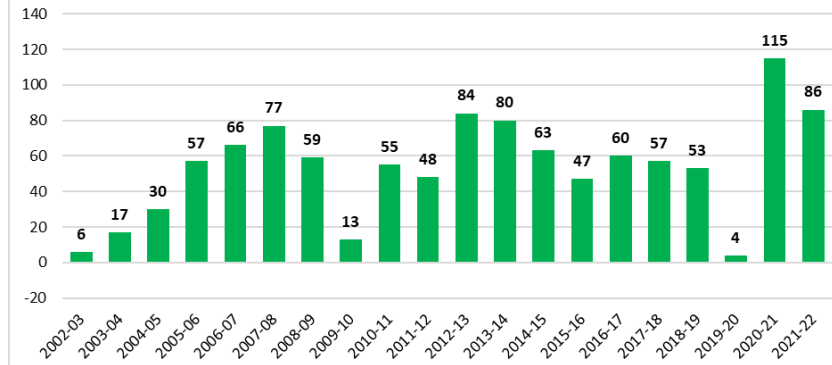




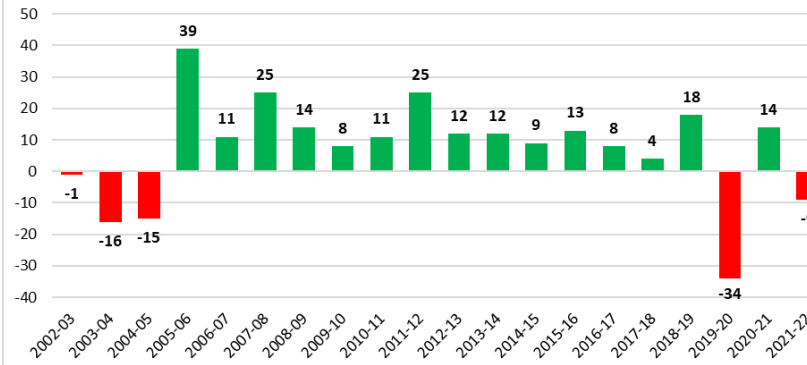


# Net Migration

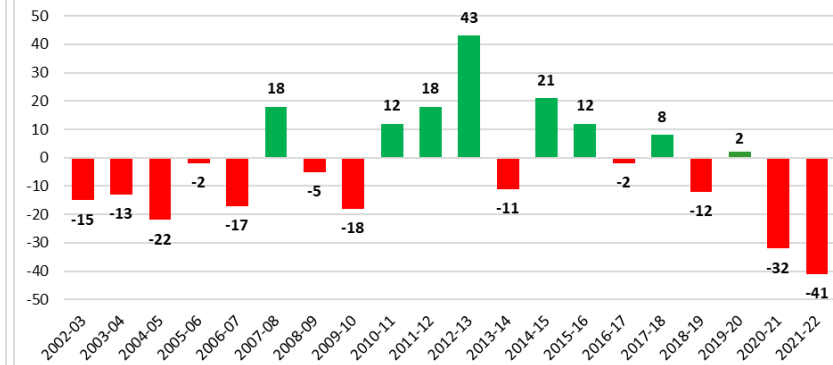
Historic Elementary Net Migration



Historic Middle School Net Migration



Historic High School Net Migration

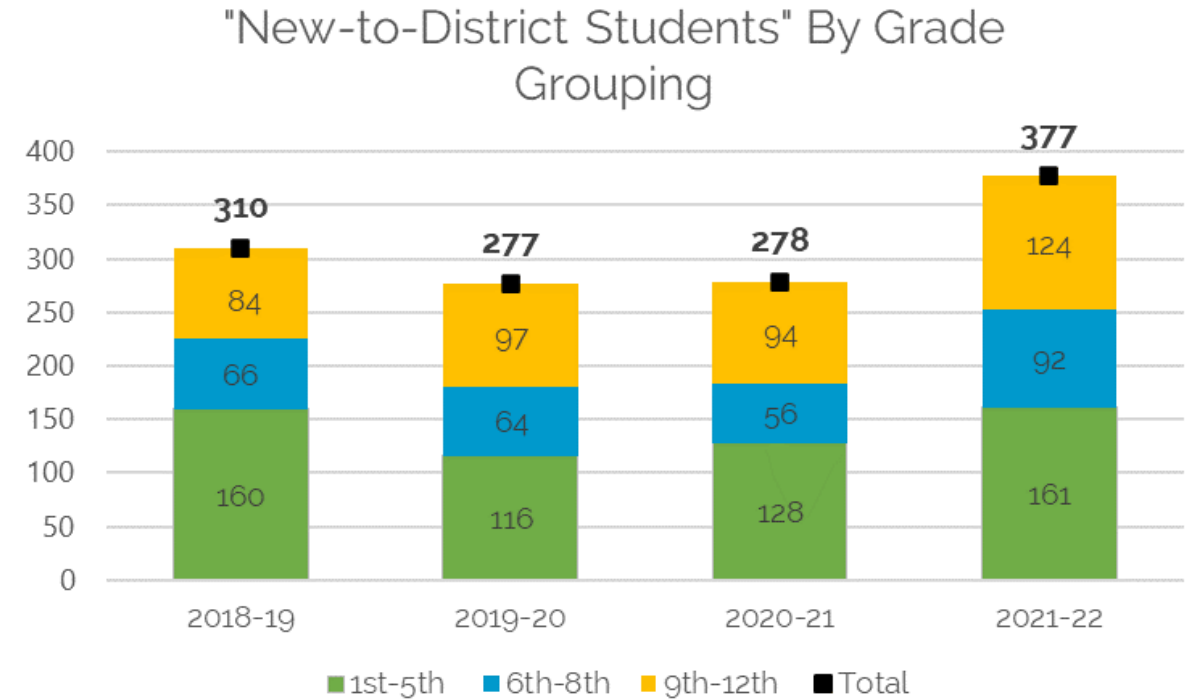


- Elementary experienced elevated levels of net in-migration over the last two years (last 10-yr avg. 65) with 2020-21 (115 students) representing a recent peak
- Over the last decade, middle school averaged a net of +5 students annually. However, the last 3 years have fluctuated with a net out-migration of 34 students in 2019-20 followed by net-in-migration of +14 students in 2020-21.
- Over the last decade, high school averaged a net out-migration of -2 students annually. Net migration at the high school has been variable with alternating periods of net in-migration and net out-migration. For 2020-21 & 2021-22, net out-migration has averaged -37 students.



# In-Migration "New-to-District Students"

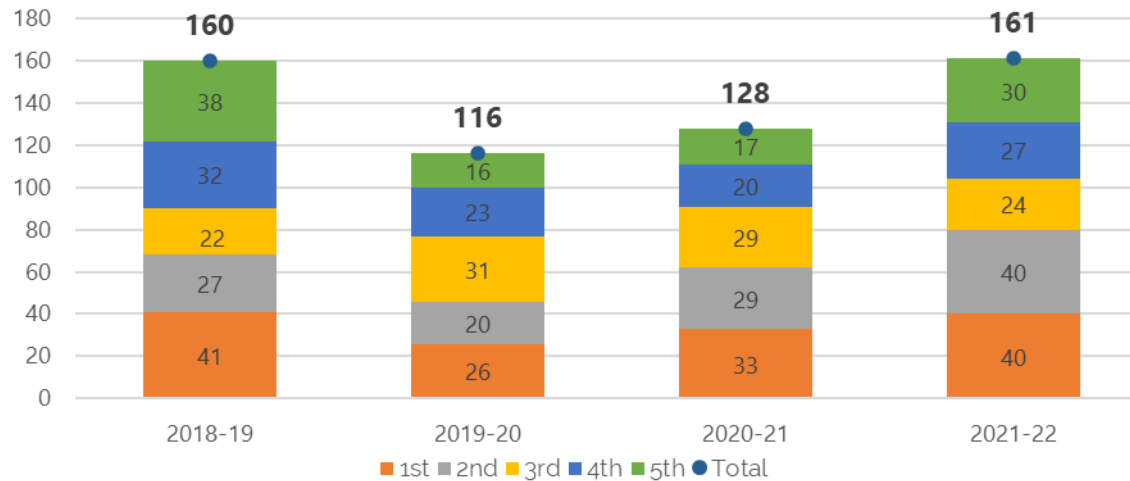
- "New-to-District Students" are identified by comparing unique student identifiers (SASID's) that were not enrolled the previous year for students in grades 1-12
- Notable uptick in 2021-22 (377 students) when compared to preceding 3-years, which averaged 288 students
- Over the past year, increases were experienced across all grade groupings
  - Elementary increased by 33
  - Middle increased by 36
  - High increased by 30



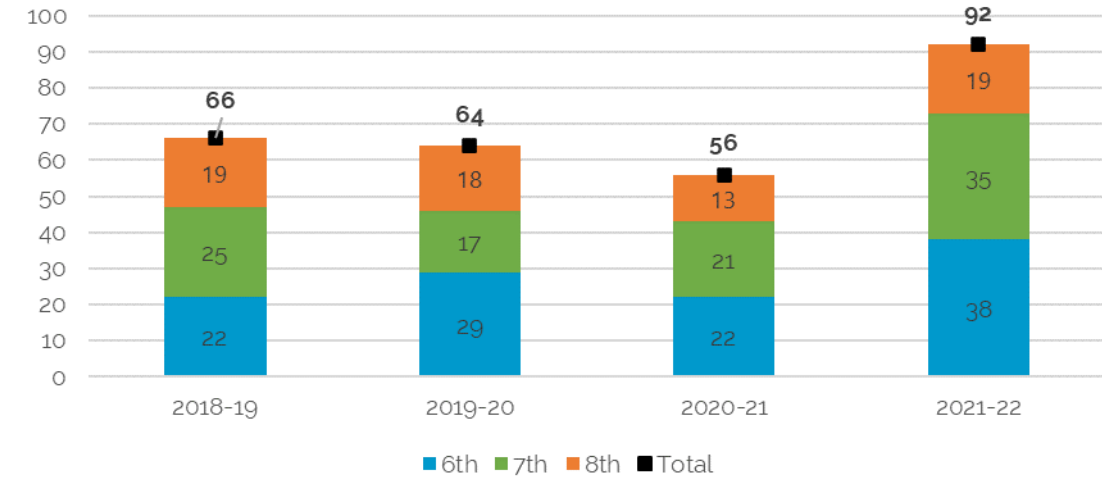


# In-Migration "New-to-District Students"

"New-to-District Students" (Grades 1st-5th)

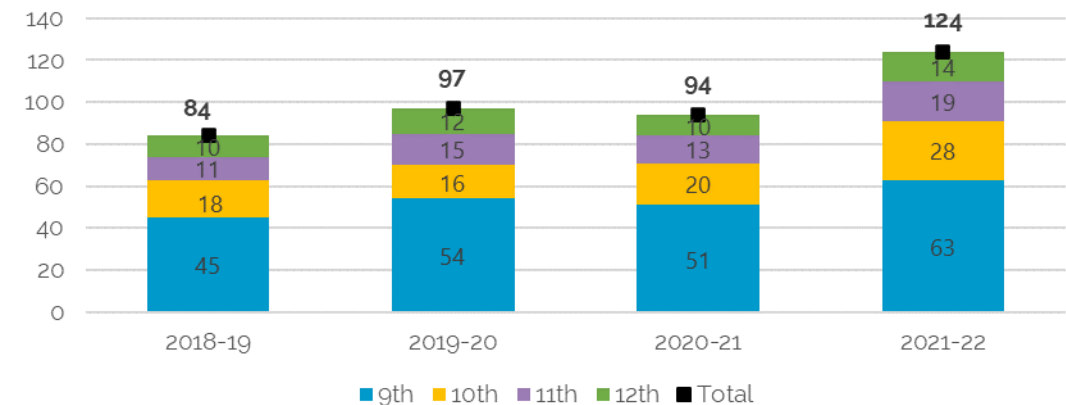


"New-to-District" Students (Grades 6th-8th)



- The increase in "New-to-District" elementary students for 2021-22 was experienced across all grades except 3<sup>rd</sup>. Most notably seen in 1<sup>st</sup> and 5<sup>th</sup> grade with increases of 11 and 13 students, respectively
- After a low in 2020-21, Middle School experienced gains across all grade levels in 2021-22. Largest growth was in 6<sup>th</sup> and 7<sup>th</sup> grade
- For 2021-22, High School also experienced gains across all grade levels with largest gains in 9<sup>th</sup> grade

"New-to-District" Students (9th-12th)

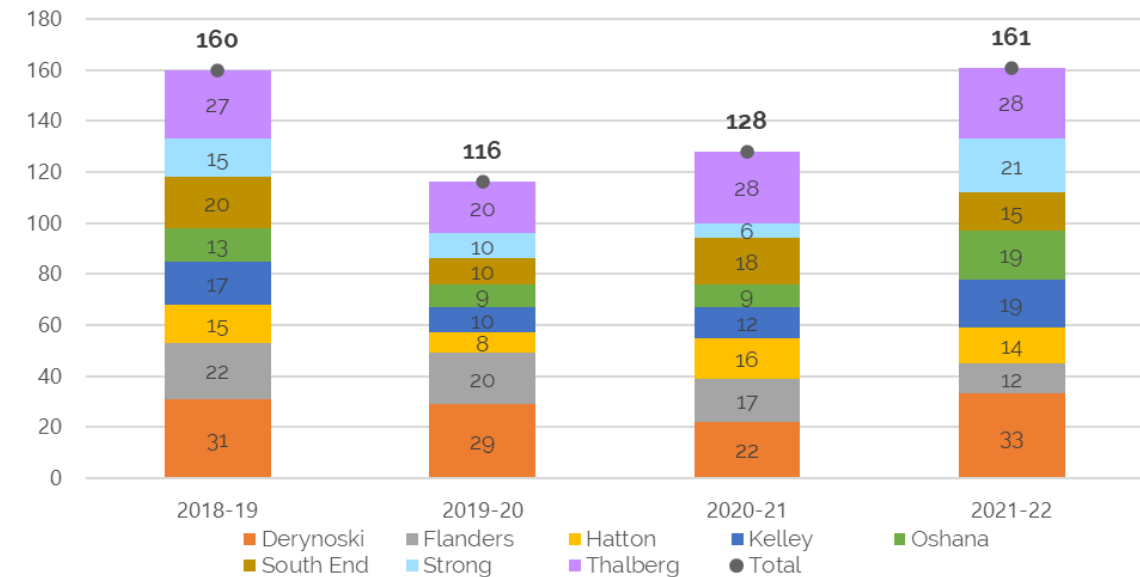




# In-Migration “New-to-District” ES Students

- “New-to-District” students vary between the individual elementary schools
- Derynoski has the most “New-to-District” students on average over the last 4-years, followed by Thalberg
- South End and Flanders average 16 and 18 students, respectively
- Hatton, Kelley, Oshana & Strong average between 13-15 students
- For 2021-22, Derynoski had 33 “new” students and Thalberg had 28

New-to-District Students (Grades 1-5)



New-to-District Students by School (Grades 1-5)

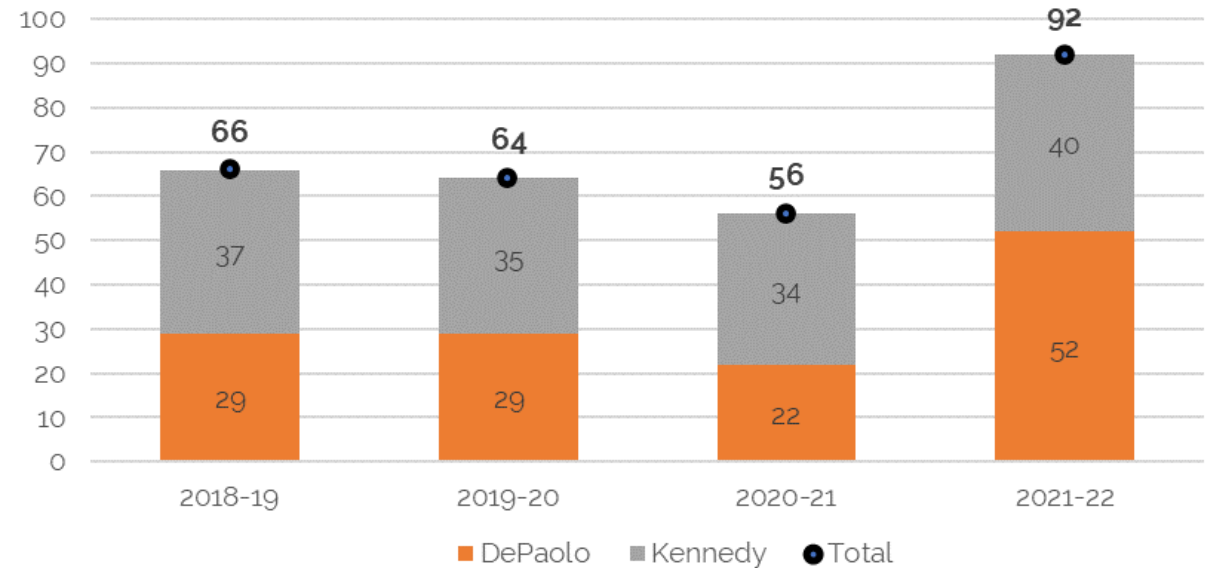
School Name	2018-19	2019-20	2020-21	2021-22	AVG
Derynoski	31	29	22	33	29
Flanders	22	20	17	12	18
Hatton	15	8	16	14	13
Kelley	17	10	12	19	15
Oshana	13	9	9	19	13
South End	20	10	18	15	16
Strong	15	10	6	21	13
Thalberg	27	20	28	28	26
Total	160	116	128	161	141



# In-Migration “New-to-District” MS Students

- “New-to-District” students vary between the middle schools
- Historically, the total number of “new” students had been fairly stable, however, 2021-22 experienced a significant increase.
- The largest increase in 2021-22, was experienced at DePaolo, which increased by 30 students. Kennedy experienced only a 6 student increase over the prior year

New-to-District Students (Grades 6-8)



New-to-District Students by School (Grades 6-8)

School Name	2018-19	2019-20	2020-21	2021-22	AVG
DePaolo	29	29	22	52	33
Kennedy	37	35	34	40	37
Total	66	64	56	92	70



# Enrollment Projections

## Enrollment Projections Building Blocks

### Starting Data

Critical to the overall accuracy of the projections, as each year builds upon the last.  
*District Projections*

**Town of  
Southington  
Births**

*Obtained from CT  
DPH & Town Clerk*

**Historic  
Enrollment  
Trends**

*Obtained from  
SPS and EdSight*

### Demographic and Housing Data

Used to inform model selection

**Unemployment  
(Town, Region)**

**Home Sales  
(1-family,  
condos)**

**Housing  
Developments –  
Approved &  
Under  
Construction**

**Population  
& Development  
Capacity**

### Projection Assumptions

Several projection models are developed by applying different persistency ratios to building blocks

**5-Year  
Average**

**3-Year  
Average**

**3-Year  
Weighted**

**Blended**



# Projections Primer

- Based on Cohort Survival Methodology – Standard method accepted by the OSCG&R for school construction projects
- The cohort survival methodology **relies on observed data from the recent past in order to project the near future**
- Persistency Ratios calculated from historic enrollment data to determine growth or loss in a class as it progresses through the school system
- Persistency Ratio of 1.0 means cohort size remains the same; 1.05 means the cohort size increases by 5%, or a cohort of 100 grows to 105 the following year
- Persistency Ratios account for the various external factors affecting enrollments: housing characteristics, residential development, economic conditions, student transfers in and out of system, and student mobility
- Changes in population, housing stock and tenure, and economic conditions help explain persistency ratios
- Changes in programming affect persistency ratios of individual schools
- Recent impacts due to the pandemic adds variability to student migration, enrollment trends, housing market conditions, residential mobility and overall economic conditions and labor market





# Projections Assumptions

These projections are predicated on the following assumptions:

- Pre-K enrollment will average 104 students over the next decade
- Housing, student generation, and future birth assumptions at the districtwide level will prove accurate
- Variable Birth-K (BK) assumptions used in each model due to fluctuating births in recent years and increased percentage of kindergartners not born in town.
- **High projections:** Assume high birth projections (average 427 annually) and avg. student in-migration of ~1.55%, which is above the 10-yr historic average of 1.3%.
- **Medium projections:** Assume medium birth projections (average 416 annually) and avg. student in-migration of ~1.32%, which is on par with historic average
- **Low projections:** Assume low birth projections (average 399 annually) and avg. student in-migration of ~1.10%, which is below the recent historic levels

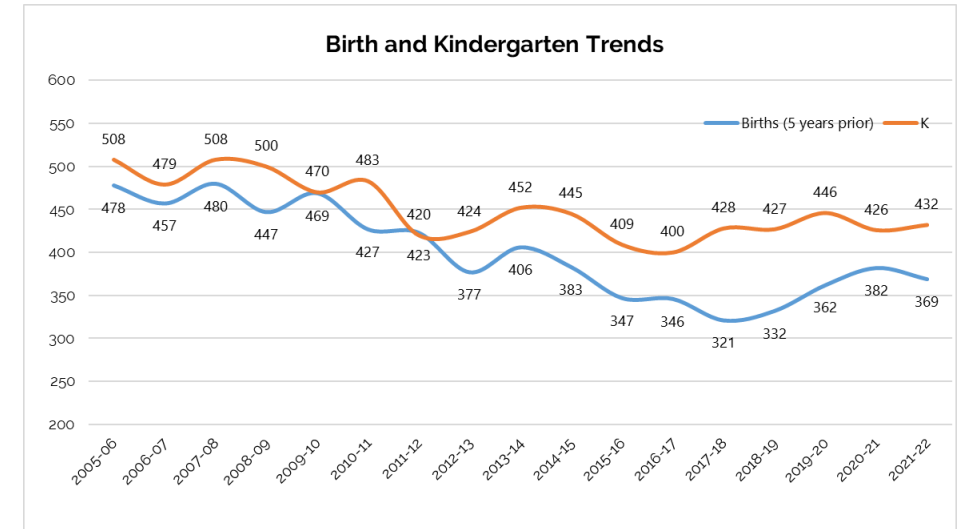




# Persistency Ratios

Kindergarten through 12th Grade Persistency Ratios by School Year

	B-K	K-1	1-2	2-3	3-4	4-5	5-6	6-7	7-8	8-9	9-10	10-11	11-12	Est. of Migration
2005-06	1.063	1.035	1.048	1.010	1.012	1.021	1.043	1.004	1.008	1.033	0.970	0.993	N/A	
2006-07	1.048	1.091	1.010	1.008	1.002	1.004	1.012	1.018	1.031	1.029	0.991	1.002	0.975	0.7%
2007-08	1.058	1.033	1.020	1.004	1.000	1.032	1.017	1.000	0.979	1.029	0.953	0.968	0.957	1.5%
2008-09	1.119	1.059	0.978	0.973	0.996	0.996	1.004	1.013	1.002	1.006	0.991	0.963	0.974	-1.1%
2009-10	1.002	1.062	0.980	1.002	1.013	1.030	1.022	1.008	1.006	1.018	0.970	0.972	0.988	0.9%
2010-11	1.131	1.057	0.989	1.019	0.984	1.004	1.027	0.998	0.998	0.969	0.946	1.022	0.984	0.5%
2011-12	0.993	1.046	0.994	0.994	1.019	1.021	1.007	1.021	1.008	1.064	0.972	1.006	0.992	0.7%
2012-13	1.125	1.069	1.044	0.974	1.013	1.026	1.012	0.996	0.983	1.019	0.959	0.986	1.038	1.4%
2013-14	1.113	1.092	1.029	0.996	0.996	1.008	0.998	0.998	1.034	0.968	0.966	0.946	1.040	0.5%
2014-15	1.162	1.049	1.017	1.011	1.013	1.035	0.981	1.002	1.000	0.962	0.973	0.988	1.018	1.1%
2015-16	1.179	1.020	1.008	1.011	1.026	1.024	1.030	1.013	1.014	1.000	0.977	0.980	1.012	2.0%
2016-17	1.156	1.010	1.040	1.013	1.021	1.015	1.018	1.039	1.025	1.005	0.963	1.006	1.028	2.1%
2017-18	1.333	1.053	1.012	1.028	1.002	1.012	1.004	1.005	1.008	0.967	0.956	1.002	1.015	1.2%
2018-19	1.286	0.991	1.010	1.010	1.027	1.037	0.982	1.006	1.000	0.966	0.992	0.991	1.017	1.3%
2019-20	1.232	0.974	0.998	1.005	1.002	0.994	0.996	0.992	0.998	0.978	1.008	0.983	1.022	-0.1%
2020-21	1.115	1.009	1.005	1.005	1.009	1.009	0.992	1.000	0.981	0.990	0.996	0.983	1.023	0.4%
2021-22	1.171	1.035	1.027	1.019	1.012	1.028	1.056	1.043	0.998	1.087	0.988	0.980	1.061	2.8%



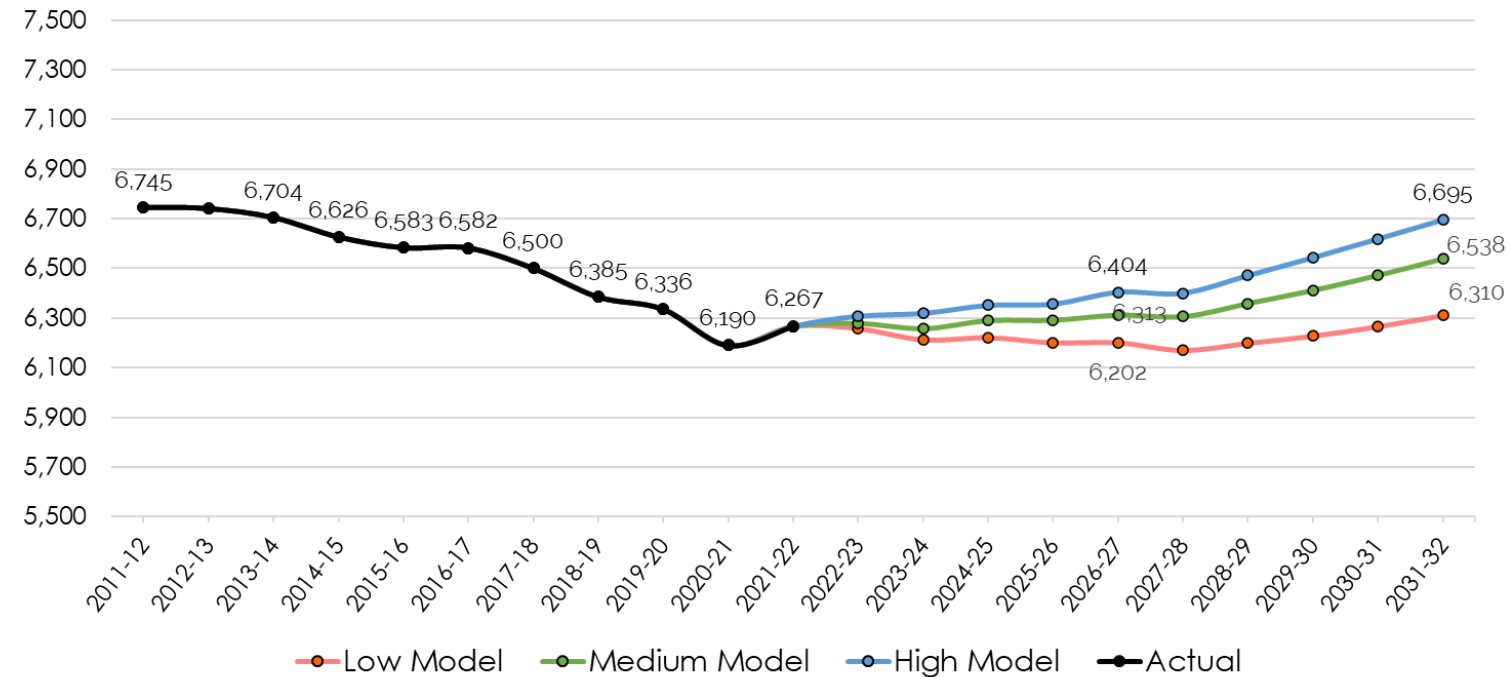
- For 2021-22, net in-migration rebounded compared to 2019-20 and 2020-21.
- Despite recent in-migration, Birth-K has been trailing historic for the last two-years compared to recent historic average of ~1.2
- Historically, births (lagged 5 years) and K have correlated very well for the last decade



# Districtwide Projections

- With uncertainty surrounding the longer-term impacts of the pandemic, it is important to keep in mind the range of enrollment projections models
- **Recent housing conditions, demographics and enrollment in-migration align best with Medium Model and represents the most likely direction**
- Both the High and Medium Models are in agreement, showing steady growth over the next decade, whereas the low model is projecting flatter enrollment then slight growth
- **Under the medium model, PK-12 enrollment is projected to grow steadily to 6,538 students by 2031-32, representing ~ 4.3% increase over the next decade**

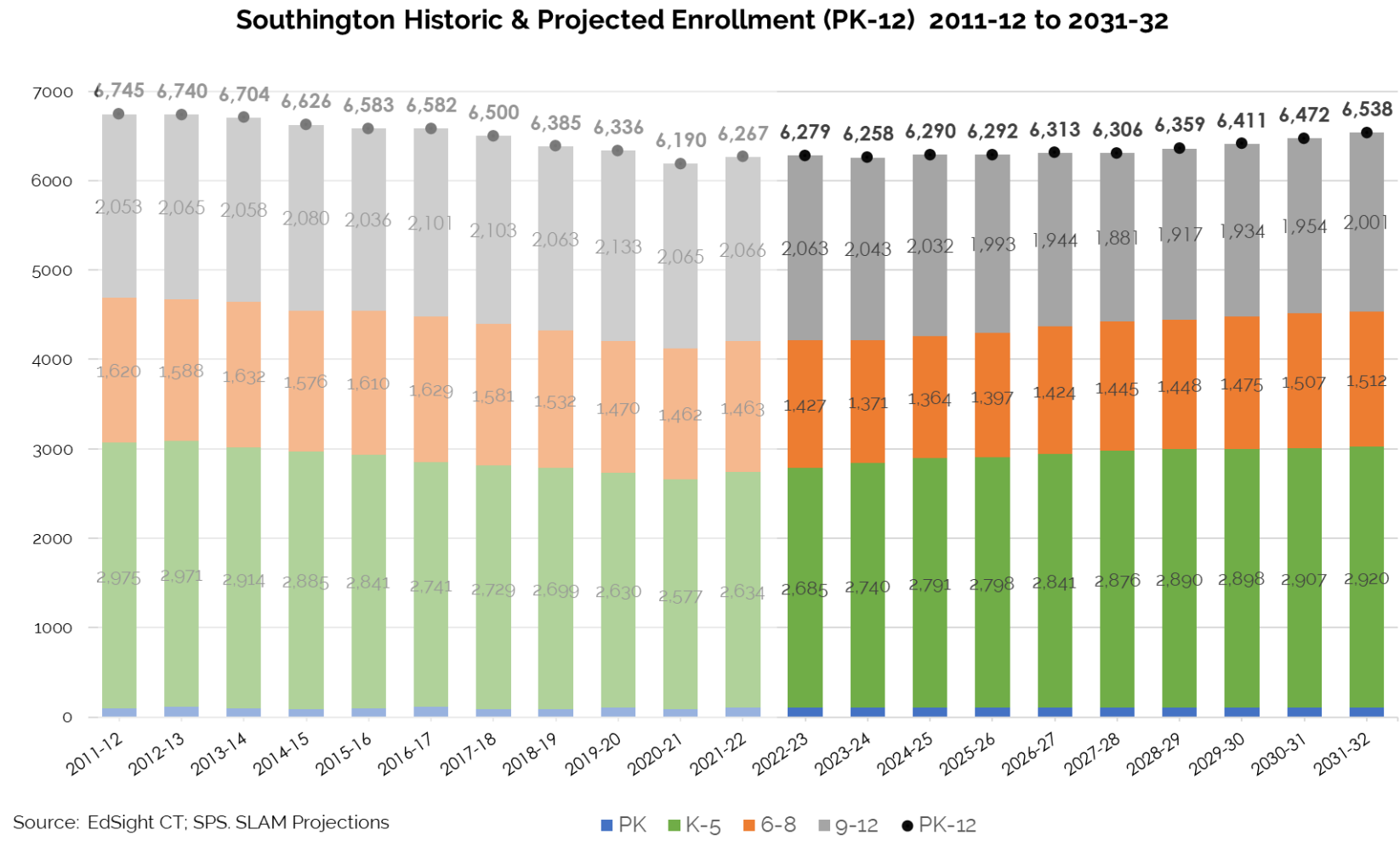
Actual and Projected PK-12 Enrollment (2011-12 to 2031-32)





# Districtwide Projections – Medium Model

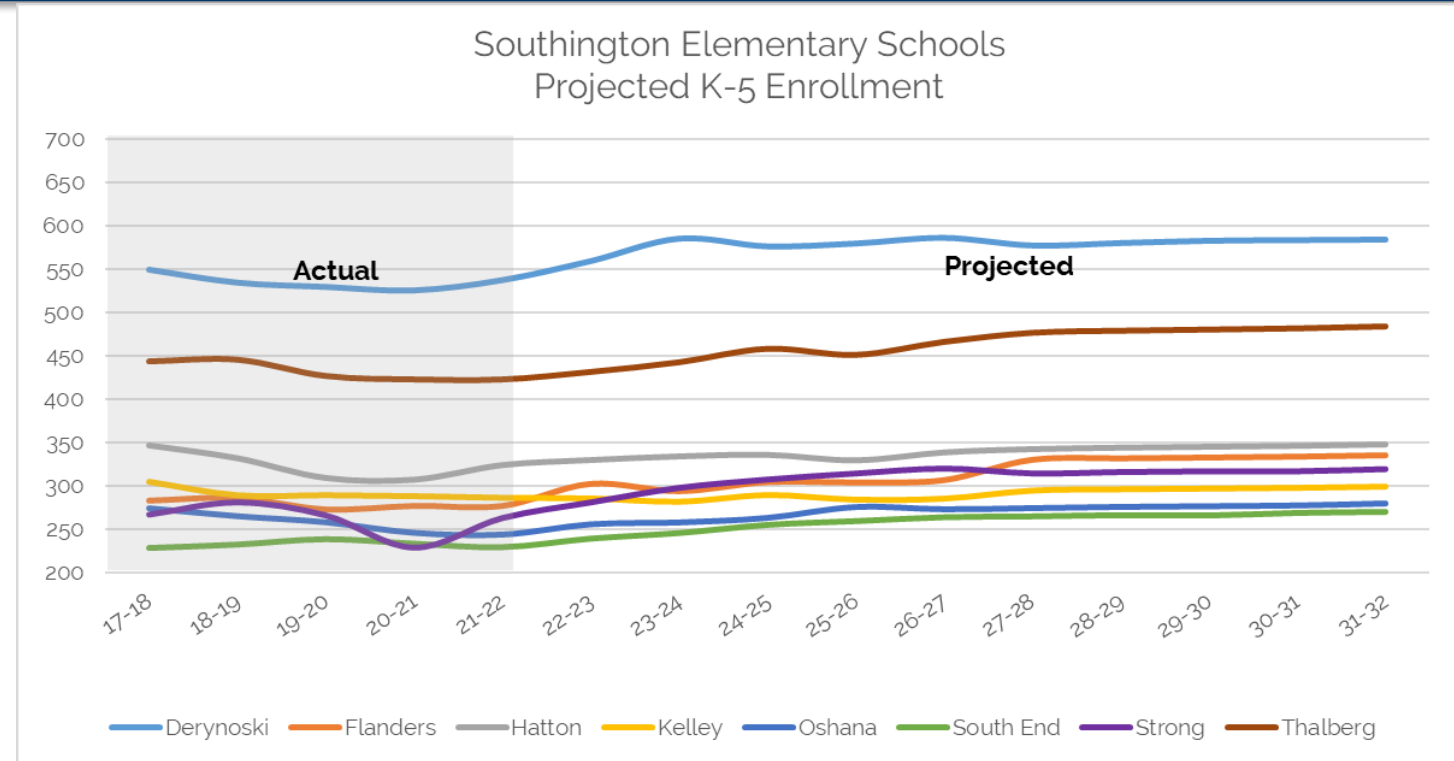
- K-5 enrollment is projected to peak in 2031-32 at 2,920 students, representing a growth of ~11%
- Over the next decade, K-5 enrollment is projected to average 2,835 students
- 6-8 enrollment is projected to average 1,437 students over the next decade, with a peak of 1,512 students in 2031-32
- 9-12 enrollment is projected to average 1,976 students over the next ten-years, with a peak of 2,001 students in 2031-32





# Elementary School Projections (Existing)

- Enrollment at Derynoski is projected to grow by ~9% over the next 5- years
- Strong is projected to grow by ~22% in the next 5-years, then level off and average ~315 students
- South End is projected to grow by ~15% by 2026-27
- Oshana, Flanders and Thalberg are projected to grow by ~10-11% over the next 5-years
- Kelley is projected to be relatively flat, while Hatton is projected to have modest growth of just under 5%

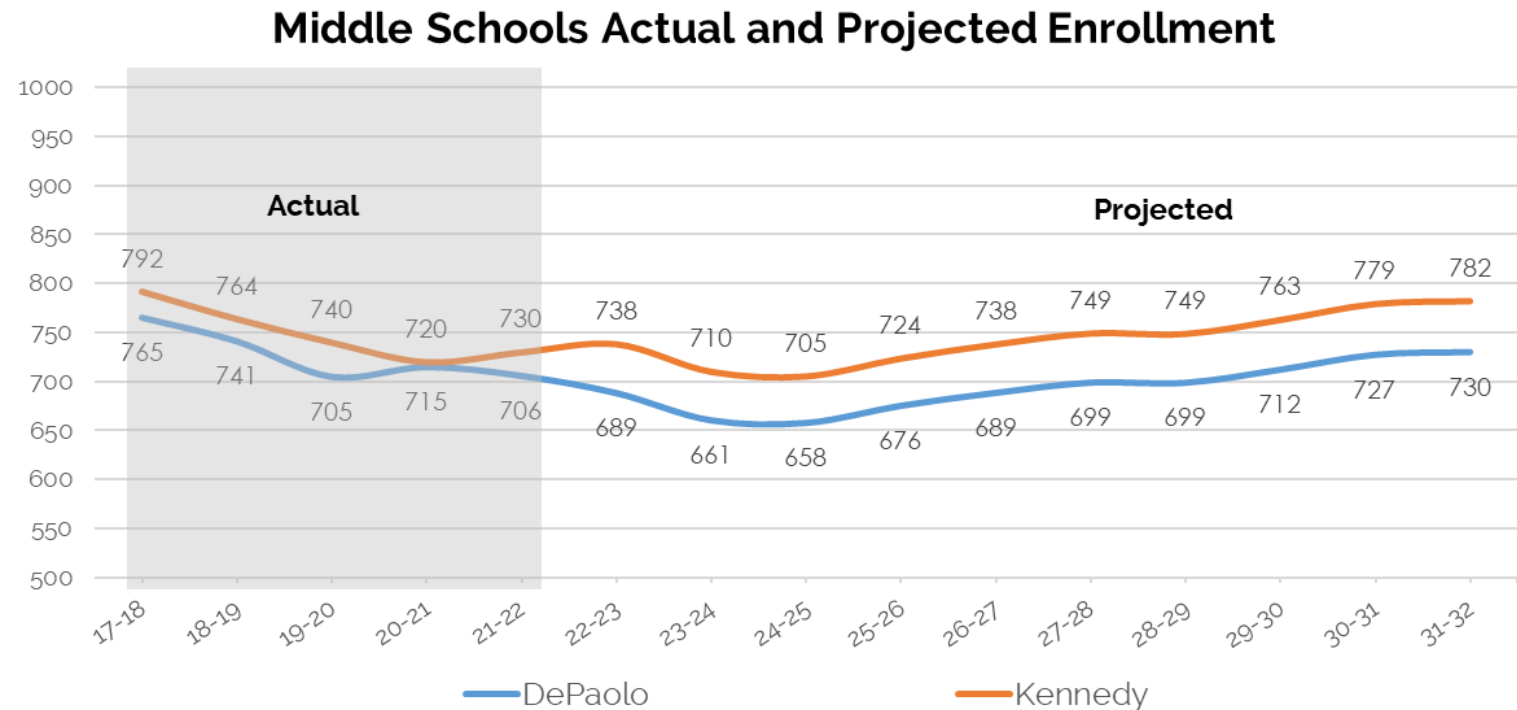


	17-18	18-19	19-20	20-21	21-22	22-23	23-24	24-25	25-26	26-27	27-28	28-29	29-30	30-31	31-32	5-years Δ	10-year Δ
Derynoski	550	535	530	526	538	560	586	577	580	587	578	581	584	584	585	9.1%	8.7%
Flanders	283	286	273	277	277	302	294	304	304	306	330	331	332	333	335	10.6%	20.9%
Hatton	347	332	309	307	324	330	334	336	330	339	343	344	345	346	348	4.6%	7.4%
Kelley	305	289	289	288	286	285	281	289	284	285	295	296	297	298	299	-0.4%	4.6%
Oshana	274	265	258	246	244	256	258	263	275	273	274	276	276	277	279	11.8%	14.5%
South End	229	233	239	234	230	240	246	255	259	264	265	266	266	269	270	14.7%	17.4%
Strong	267	281	266	229	263	281	298	307	314	320	314	316	317	317	319	21.6%	21.4%
Thalberg	444	446	427	423	423	432	443	459	452	467	477	480	481	482	485	10.3%	14.6%



# Middle School Projections (Existing)

- Kennedy is projected to grow by ~ 7% over the next decade, and enrollment will average 744 students with a peak of 782 in 2031-32
- DePaolo is expected to decline in the short term with enrollment bottoming out at ~660 students by 2023-24, then rebound and grow to 730 students by 2031-32



Middle Projections by School (Medium)																	
	17-18	18-19	19-20	20-21	21-22	22-23	23-24	24-25	25-26	26-27	27-28	28-29	29-30	30-31	31-32	5-years Δ	10-year Δ
DePaolo	765	741	705	715	706	689	661	658	676	689	699	699	712	727	730	-2.4%	3.4%
Kennedy	792	764	740	720	730	738	710	705	724	738	749	749	763	779	782	1.1%	7.2%



# Projection Takeaways

- Projections revised slightly upwards due to continued strong housing market, in-migration rates and larger birth cohorts
- Medium Projection Model reflects the most likely trajectory for future enrollment. However, recent changes to enrollment drivers from the pandemic bear watching. Should elevated housing market activity continue for the next several years at the current levels, the High Projection Model may prove more accurate in the long-term
- Overall PK-12 enrollment is projected to increase by ~1% over the next five years, followed by greater growth in the last 5-years, resulting in an overall growth of 4.3% or ~271 students
- Elementary enrollments are projected to increase by 7.8% (~210 students) over the next 5-years with all schools experiencing growth
- Middle school enrollment is projected to bottom out in 2024-25 at 1,364 students, then slowly rebound with an average of 1,438 students over the next ten years
- High school enrollment is projected bottom out in 2027-28 at 1,881 students and then recover, exceeding 2000 students again in 2031-32



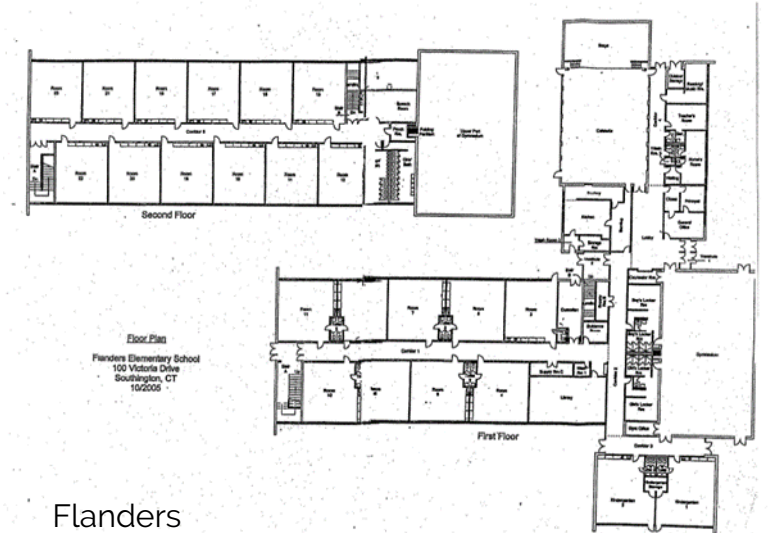
# Capacity & Utilization



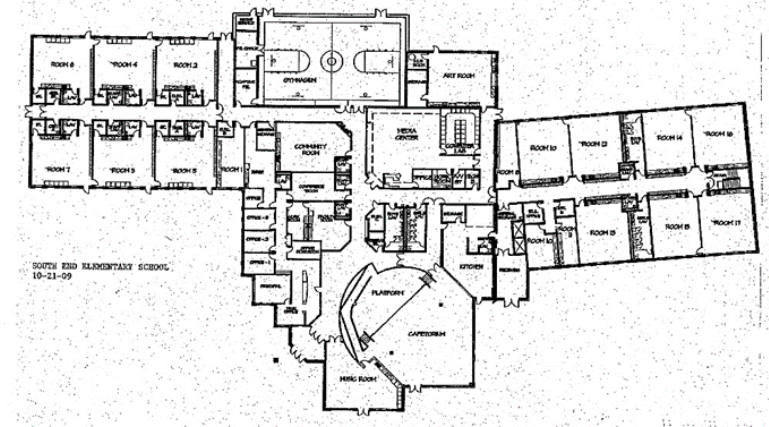


# Elementary Capacity Process

- Data collected from SPS Elementary Building Leadership in the form of annotated floor plans identifying use of space within each elementary building
- Categorized Rooms into Academic, Core, Shared, Special Ed., Resource, Support Spaces, etc.
- Functional Capacity is determined by the **current use** of buildings and Academic Spaces are drivers for elementary capacity
  - K-5 classrooms at **policy max per grade**
    - K @ 18, 1<sup>st</sup> @ 21, 2<sup>nd</sup> @ 22, and 3<sup>rd</sup>-5<sup>th</sup> at 24 students per classroom
  - Other full-size classrooms assumed 22 student loading level
  - Districtwide Program SPED classrooms loaded at 5 students per



Flanders



South End





# Elementary Capacity Process

**Southington Public Schools: Elementary Facilities Room Inventory**

School	Full-Size Classrooms						K-5 Seat Capacity	K-5 Enroll (21-22)	Utilization Percentage 2021-22
	TOTAL	PK	K-5	Resource / SPED	District- wide Program/ FRC	Other			
Derynoski	37	0	31	5	0	1	709	539	76.0%
Flanders	23	0	18	5	0	0	399	277	69.4%
Hatton	29	3	18	1	5	2	468	324	69.2%
Kelley	22	0	19	2	1	0	426	286	67.1%
Oshana	15	0	15	0	0	0	333	244	73.4%
South End	15	0	15	0	0	0	333	230	69.2%
Strong	23	3	16	3	1	0	355	263	74.2%
Thalberg	24	0	24	0	0	0	532	423	79.5%
<b>TOTAL:</b>	<b>188</b>	<b>6</b>	<b>156</b>	<b>16</b>	<b>7</b>	<b>3</b>	<b>3,554</b>	<b>2,586</b>	<b>72.8%</b>
Based on 11/21 Classroom Inventory provided by SPS.									

- Total K-5 Capacity reflects current room and building usage. For current school year, elementary schools are utilized at 73%, with individual schools ranging from ~69%-80%.
- When compared to facility capacity and utilization from 2019, there are additional Full-size classrooms dedicated as grade level academic classrooms (K, 1<sup>st</sup>, etc....). With similar K-5 enrollment, this is likely a function of SPS operations during the pandemic. With easing of pandemic conditions, these additional grade level classrooms may be phased out.



# Elementary Utilization Analysis

- With projected increase in K-5 enrollment, overall utilization increases from ~73% - 82%
- In the next 5-years, the utilization gap is projected to widen by 2026-27, with schools projected to range from 67%-89%
- As enrollment increases, the seat surplus diminishes overtime with a surplus of ~700 seats spread across eight buildings by midpoint
- For the last 5 years, the seat surplus averages ~650 seats with an average utilization 81.5%

Elementary Projections by School (Medium)											
ES School	21-22	22-23	23-24	24-25	25-26	26-27	27-28	28-29	29-30	30-31	31-32
Derynoski	538	560	586	577	580	587	578	581	584	584	585
Flanders	277	302	294	304	304	306	330	331	332	333	335
Hatton	324	330	334	336	330	339	343	344	345	346	348
Kelley	286	285	281	289	284	285	295	296	297	298	299
Oshana	244	256	258	263	275	273	274	276	276	277	279
South End	230	240	246	255	259	264	265	266	266	269	270
Strong	263	281	298	307	314	320	314	316	317	317	319
Thalberg	423	432	443	459	452	467	477	480	481	482	485
<b>Total</b>	<b>2,585</b>	<b>2,685</b>	<b>2,740</b>	<b>2,791</b>	<b>2,798</b>	<b>2,841</b>	<b>2,876</b>	<b>2,890</b>	<b>2,898</b>	<b>2,907</b>	<b>2,920</b>
<b>K-5 Capacity</b>	<b>3,554</b>	<b>3,554</b>	<b>3,554</b>	<b>3,554</b>	<b>3,554</b>	<b>3,554</b>	<b>3,554</b>	<b>3,554</b>	<b>3,554</b>	<b>3,554</b>	<b>3,554</b>
<b>Seat Δ</b>	<b>+969</b>	<b>+869</b>	<b>+814</b>	<b>+763</b>	<b>+756</b>	<b>+713</b>	<b>+678</b>	<b>+664</b>	<b>+656</b>	<b>+647</b>	<b>+634</b>

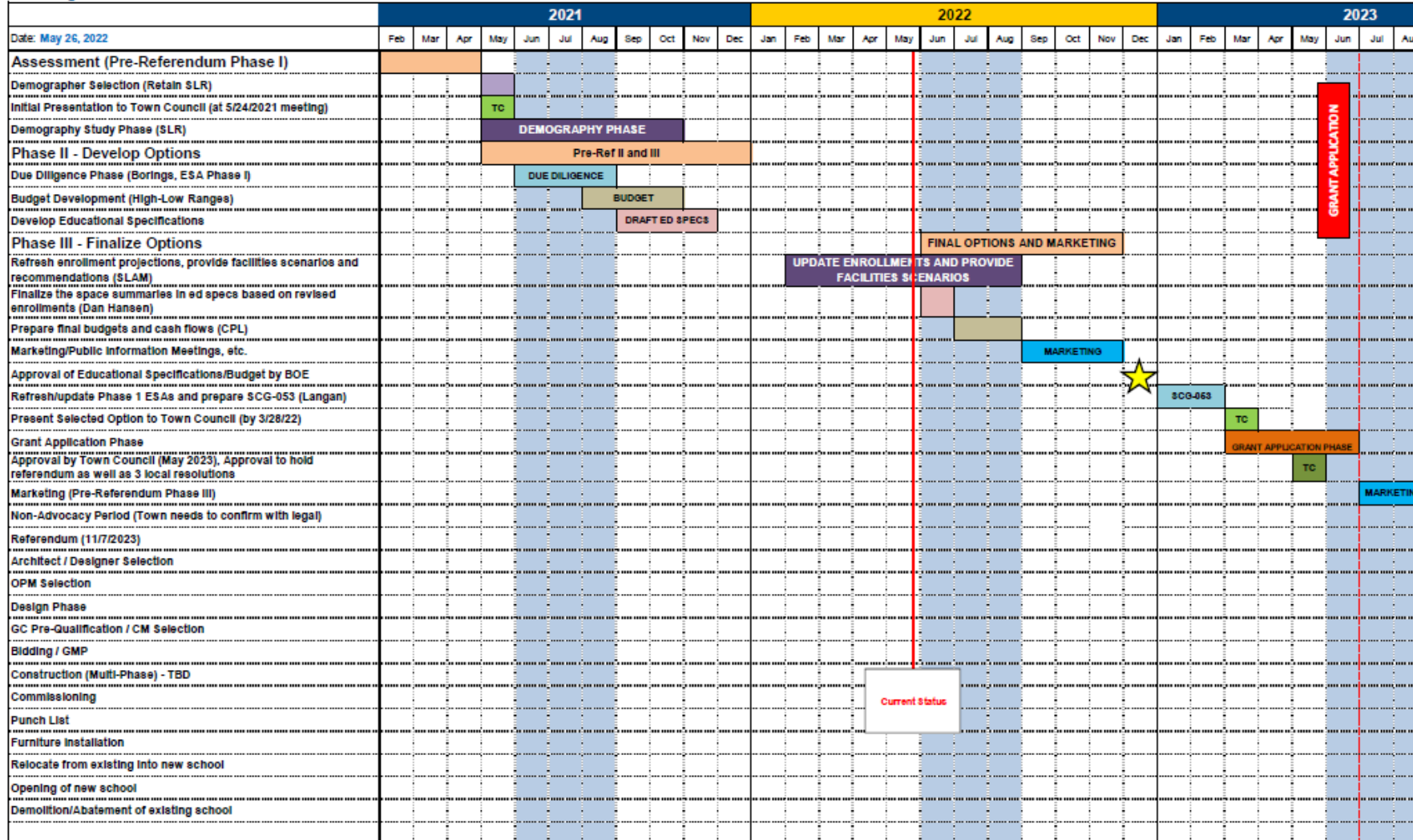
  

Elementary Projected Utilization											
ES School	21-22	22-23	23-24	24-25	25-26	26-27	27-28	28-29	29-30	30-31	31-32
Derynoski	75.9%	79.0%	82.6%	81.4%	81.8%	82.8%	81.5%	81.9%	82.3%	82.4%	82.5%
Flanders	69.4%	75.7%	73.6%	76.2%	76.1%	76.8%	82.6%	83.0%	83.3%	83.5%	83.9%
Hatton	69.2%	70.5%	71.4%	71.8%	70.4%	72.4%	73.2%	73.6%	73.8%	74.0%	74.4%
Kelley	67.1%	66.9%	66.0%	67.9%	66.6%	66.9%	69.1%	69.5%	69.7%	69.9%	70.2%
Oshana	73.4%	76.9%	77.5%	79.1%	82.8%	82.1%	82.5%	82.9%	83.1%	83.4%	84.0%
South End	69.2%	72.1%	74.0%	76.8%	78.0%	79.4%	79.7%	80.0%	80.0%	80.8%	81.2%
Strong	74.2%	79.2%	83.9%	86.6%	88.6%	90.2%	88.6%	89.1%	89.3%	89.3%	90.0%
Thalberg	79.5%	81.2%	83.3%	86.2%	84.9%	87.7%	89.7%	90.2%	90.4%	90.7%	91.1%
<b>Total</b>	<b>72.7%</b>	<b>75.6%</b>	<b>77.1%</b>	<b>78.5%</b>	<b>78.7%</b>	<b>79.9%</b>	<b>80.9%</b>	<b>81.3%</b>	<b>81.5%</b>	<b>81.8%</b>	<b>82.2%</b>



# Project Schedule

Southington Schools Master Plan





# Project Schedule

Southington, Town of  
Southington Schools Master Plan

