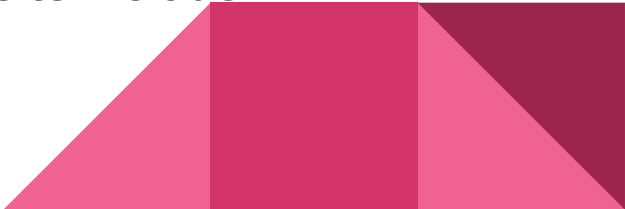


Renaissance: STAR Assessment

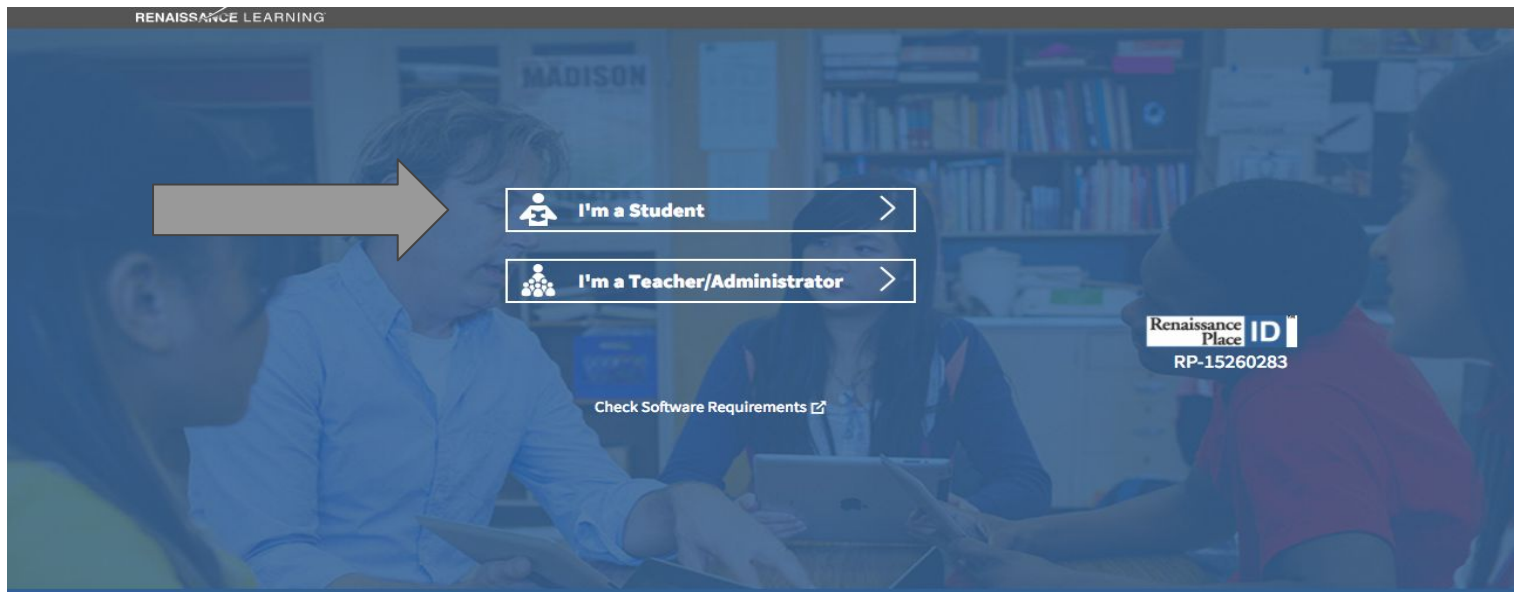
Teacher Administration
Middle School Overview

STAR Assessment General Information

- **STAR Reading and Math assessments will be administered 4 times a year**
 - September 5-15th March 3-16th
 - December 7-21st May 21-8th
 - **LA and Math teachers will administer the STAR during a class period**
 - **The assessment is**
 - Computer Adaptive consisting of 34 questions
 - Takes up to 25 minutes to complete
 - A Timed Test
 - Math (Reader is enabled, students will need earbuds)
 - **Test Preferences can be set for EL and SPED students to include:**
 - Extended Question Time Limit
 - Adjusted Instructional Reading Level
- 

How do students access the assessment?

- Students and teachers will access the STAR assessment/reports using the following website: <https://hosted377.renlearn.com/13480/>
- Students will Click on **I'm a student**



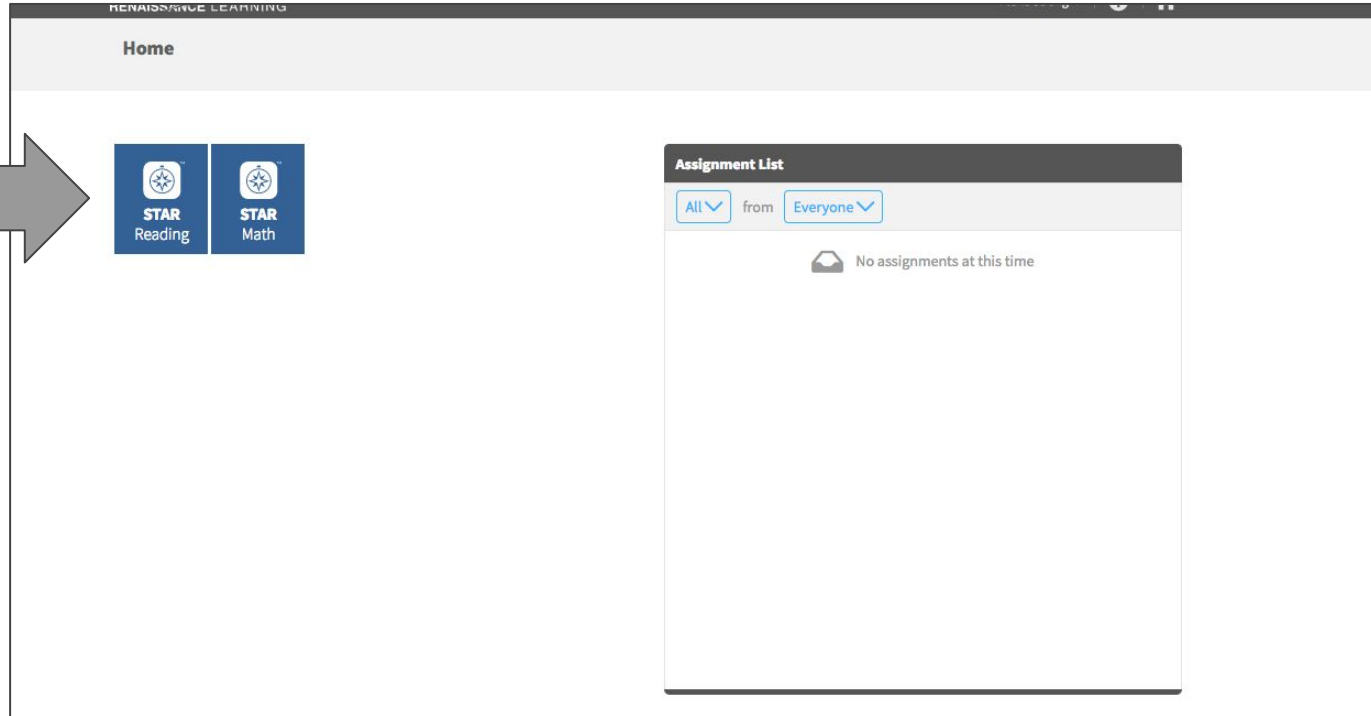
How do students access the assessment?

- Students will enter their login information
 - Username: first name followed by their last name, no space: Ex. (John Smith) *johnsmith*
 - Password: Student ID number found in Powerschool: Ex. 1123078 (Student number/Lunch Number)
- Students will click Log In



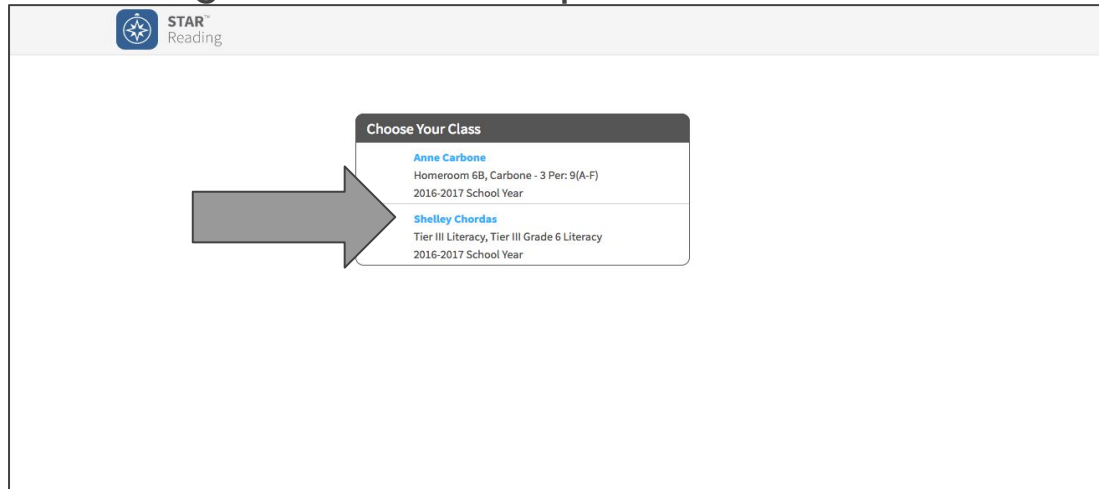
How do students access the assessment?

- Once a student logs in, they will select either STAR Reading or STAR Math



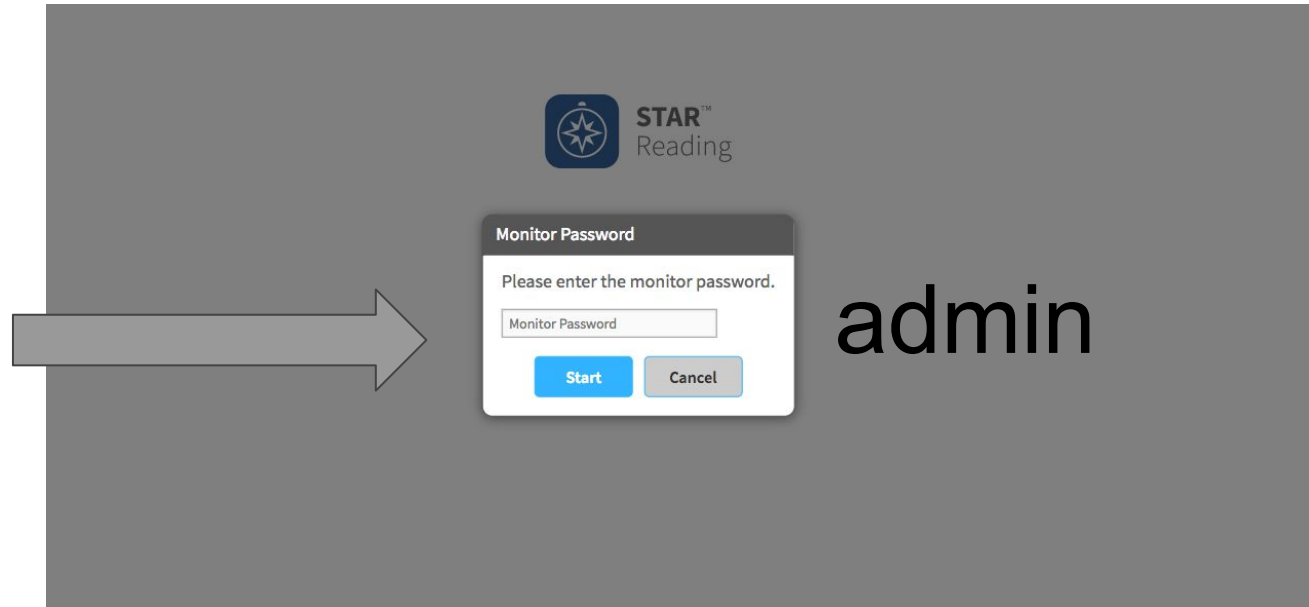
How do students access the assessment?

- If a student is assigned to more than one class the program will ask the student to select the class in which they are taking the test.
- The student will select the appropriate teacher's name and click NEXT.
- Regardless of the class the student selects the student's test results will show up on all assigned teachers' reports.



How do students access the assessment?

- The program requires a MONITOR password to be entered.
- The purpose of the monitor password is for teachers to start and stop tests.
- Teachers should enter: **admin**




Practice Test

- Students will begin the test by answering 3 practice test items.
- Students **MUST** answer the practice questions correctly.
- If a student does not answer the practice questions correctly, the test will be stopped and require a teacher to enter the monitor password: **admin**
- At this time the teacher should have a quick conference with the student about the importance of completing the test seriously and carefully.



Testing Time Limits

- Students are given a specific amount of time per question
 - Reading
 - Questions # 1-10: 45 seconds per question
 - Questions # 11-34: 2 minutes per question
 - Math
 - All questions: 3 minutes per question
- If the student is running out of time to answer a question
 - a clock will flash in the center of the screen
 - The clock will blink three times before times runs out
 - If the student does not select an answer before time runs out it will be considered a wrong answer and move on to the next question.

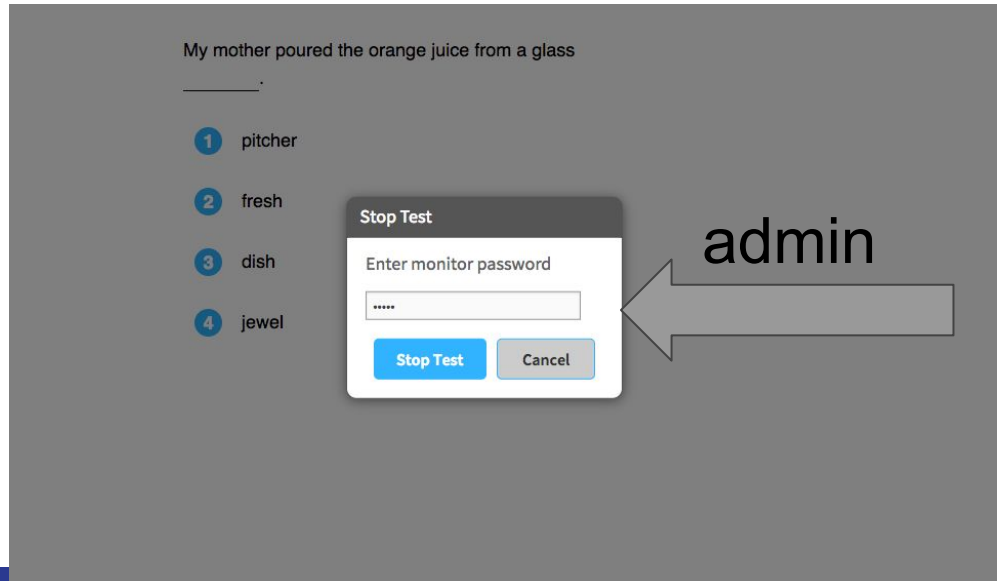


My dog welcomed me by standing on her legs.

- 1 dangerous
- 2 hind
- 3 cotton
- 4 opposite

What if a student needs to STOP a test?

- If at anytime a test needs to be stopped the student/teacher may click STOP Test.
- The teacher must enter the MONITOR PASSWORD: admin
- Then you MUST click either click **RESUME LATER** to save the current test. Click **STOP TEST** to delete the test completely.



Locked Student Account

- If a student enters the incorrect username and password too many times the program will **LOCK** the student's account.
- To unlock a student's account the teacher will need to
 - Login as the teacher
 - Click on users
 - Click on Clear Locked Students
 - Enter the student's name
 - Click Clear

The screenshot displays the Renaissance Place Real Time interface. A large grey arrow points from the 'Users' menu item in the bottom navigation bar to the 'Personnel, Students, and Parents' section on the right. Another large grey arrow points from the 'Clear Locked Students' option in the 'Students' section to the 'Users' menu item.

Navigation Path:

- Home > Personnel, Students, and Parents
- Personnel, Students, and Parents
- Students
- Clear Locked Students
- Users

Dashboard Content:

- STAR Reading, STAR Reading Spanish, STAR Early Literacy, STAR Early Literacy Spanish, STAR Math, STAR Math Spanish, Renaissance-U, Add Content
- Dashboards and Reporting: Reading Dashboard, Math Dashboard, New Reports, Summary Dashboard, Consolidated Reports
- Users, Courses and Classes, School Years, Product Administration

Personnel, Students, and Parents Section:

- Personnel**
 - Add School Personnel
 - View Personnel
 - Clear Locked Personnel
- Students**
 - Add Student
 - View Students
 - Edit Multiple Students
 - Edit Multiple School Enrollments
 - Clear Locked Students
- Related Student Tasks**
 - Merge Student Records
 - Import Information
 - View Import Status
 - Export Information
 - Set Up Characteristics
- Parents**
 - Add Parent
 - View Parent
 - Clear Locked Parents
- User Profile**
 - Login Settings

Sample STAR Reading Test Item

I confessed my feelings to the first person I encountered, so desperate was I for a confidant .

- 1 proxy
- 2 charlatan
- 3 confidant
- 4 repartee

Next

Sample STAR Reading Test Item

The Lost Villages are nine Canadian towns that were deliberately flooded in 1958 when a dam was constructed to create the Saint Lawrence Seaway. The seaway project linked the Atlantic Ocean to the Great Lakes, displacing nearly 6,500 residents who were moved to nearby planned communities. Today, aerial views reveal shadows of the Lost Villages beneath the river's murky surface. Submerged old roads still run by the silt-covered remnants of abandoned homes, barns, and bridges.

What is the effect of the image in the last sentence?

- 1 It evokes an eerie sense of the villages' past.
- 2 It gives an idea of how the residents once lived.
- 3 It confuses the reader into thinking the roads still operate.

Sample STAR Math Test Items

Which expression can be used to find the output numbers in the table?

Input (p)	Output
108	12
117	13
126	14
135	15

- A** $p \div 9$ **B** $9p$
C $\frac{9}{p}$ **D** $96 - p$

Which table matches the rule “subtract 4 from the input number”?

A

Input	6	9	11	15
Output	8	11	13	19

B

Input	10	13	15	19
Output	6	9	11	15

C

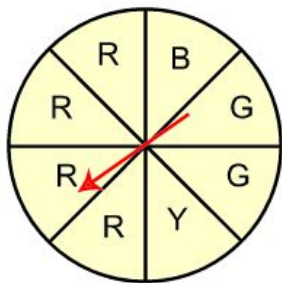
Input	6	9	11	15
Output	10	13	15	19

D

Input	10	11	13	17
Output	6	9	11	15

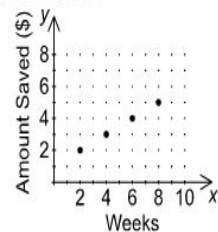
Sample STAR Math Test Item

If you spin the spinner, what is the probability of the pointer landing in the Y section?



- A** $\frac{1}{2}$ **B** 1 **C** 0 **D** $\frac{1}{8}$

Estella saves some money each week. The graph shows the amount she has saved.



Which table shows the information in the graph?

A

Weeks (x)	2	4	6	8
Amount Saved (y)	\$1	\$2	\$3	\$4

B

Weeks (x)	1	3	5	7
Amount Saved (y)	\$1	\$3	\$5	\$7

C

Weeks (x)	1	3	5	7
Amount Saved (y)	\$2	\$4	\$6	\$8

D

Weeks (x)	2	4	6	8
Amount Saved (y)	\$2	\$3	\$4	\$5

STAR Testing Support Contact

Staff Member Contacts

- Math Specialists
- Literacy Specialists
- Administration

Renaissance Support Resources

- District Training Sessions
 - Renaissance U
 - Live Chat
- 